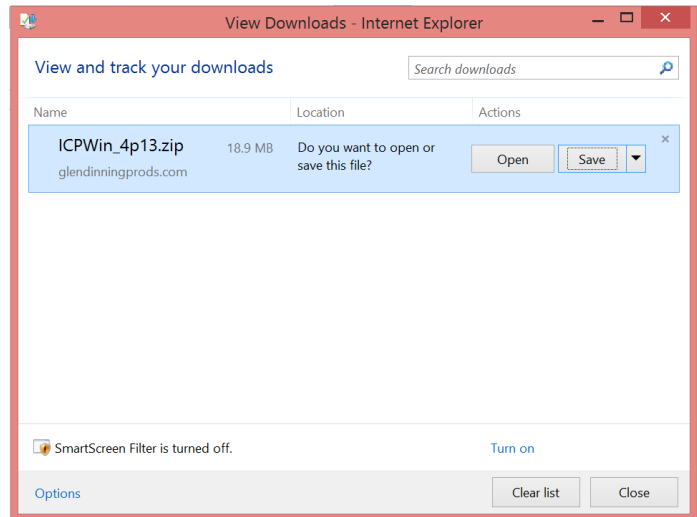
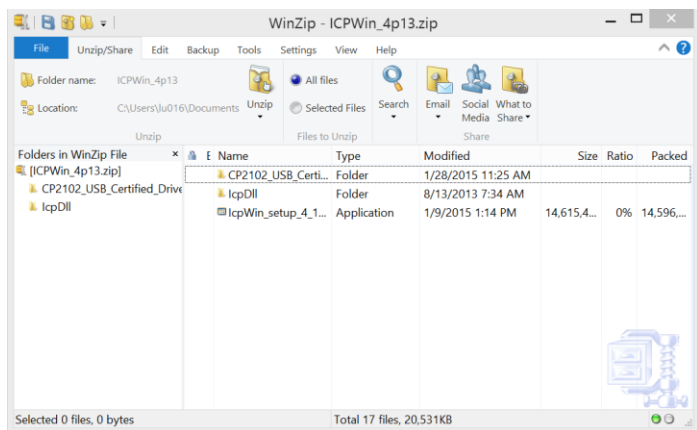


This is the installation procedure for the In Circuit Programmer Application as well as the USB driver software. This installation is necessary before the Component Software Download Tool can be used to load new software into Cummins Marine Control systems such as lever control stations, inboard joystick, throttle control processor modules, and the thruster interface modules.

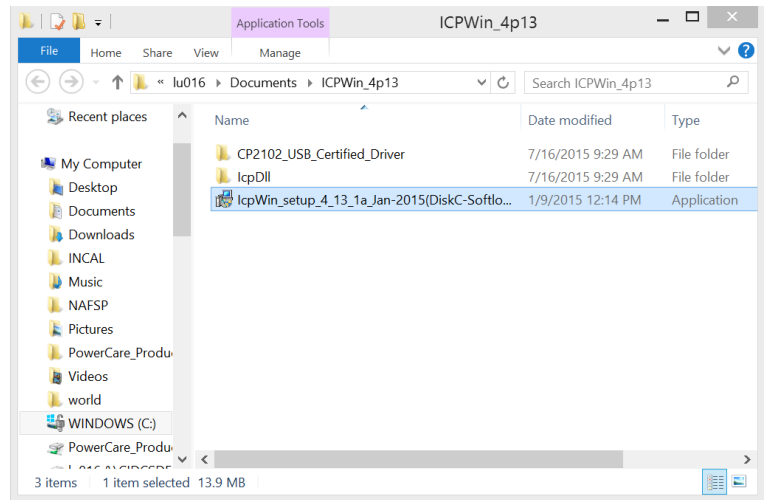
1. Open the **file download window** in your browser to see the most recent downloads. *(Depending on specific browser, this window may open automatically after the file is downloaded)*
2. Click **“Open”** to open the Zip folder containing the files.



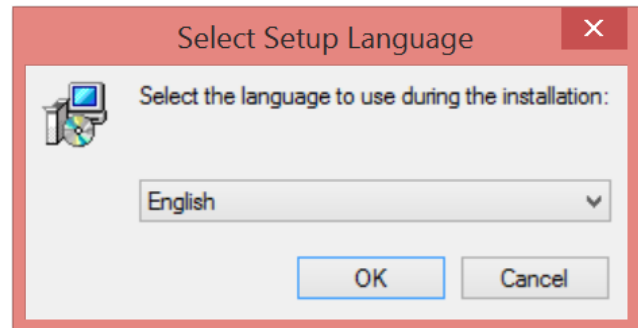
3. Click the **“Unzip”** button to extract the files to a folder of a known location. After this is completed open the folder containing the extracted files.



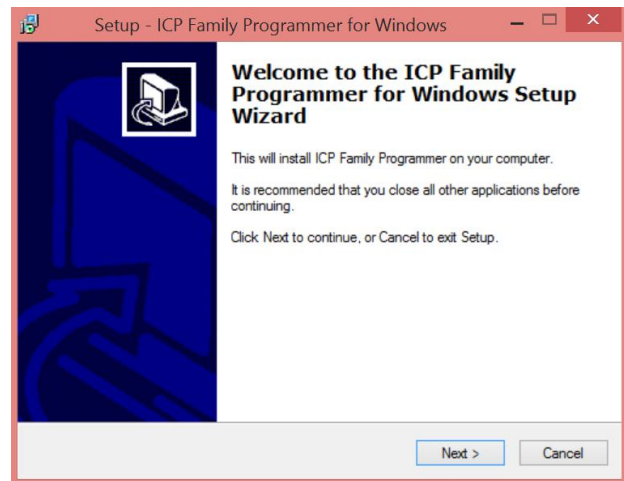
4. Double click on the file “IcpWin_setup_4_13_1a_Jan-2015(DiskC-Softlog)” *Note: administrative rights for the computer are needed for this process.*



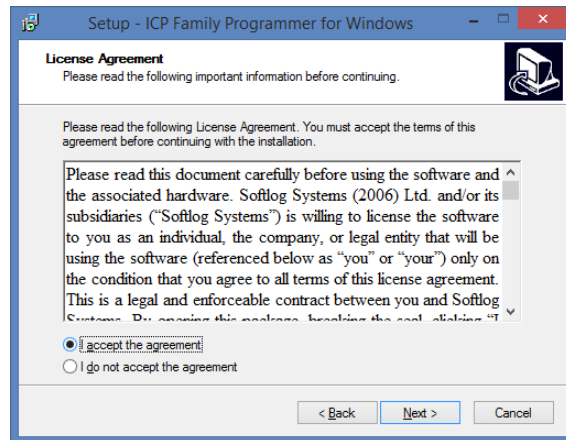
5. After completing the steps above, you will be prompted to select a language. Select the desired language and click **OK**:



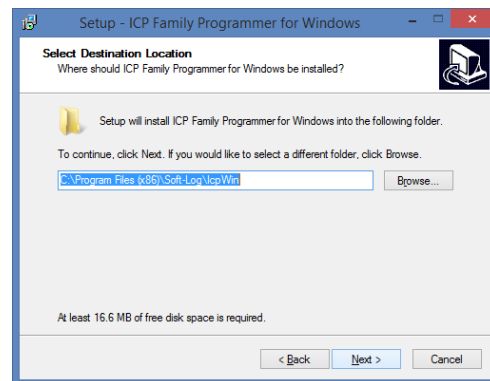
6. Click **Next** to begin the setup:



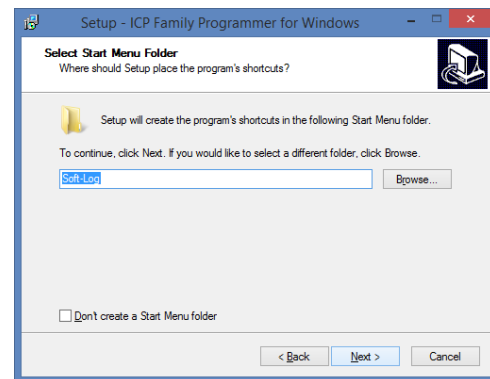
7. Select the **“I accept the agreement”** on the License Agreement screen and click **Next**:



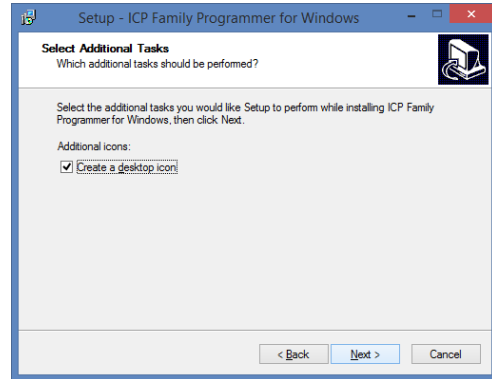
8. Choose the program destination location and click **Next**:



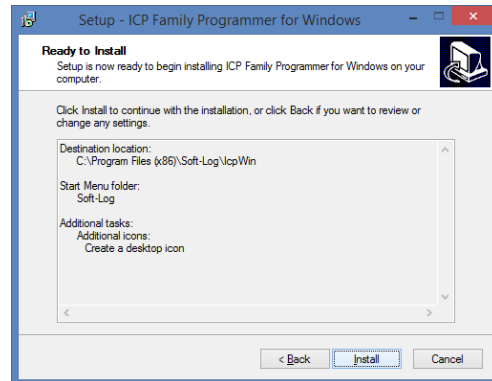
9. Click **Next** to add a shortcut to the start menu folder:



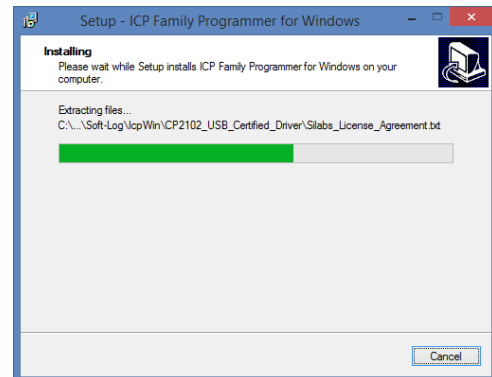
10. Click **Next** to create an icon on the desktop:



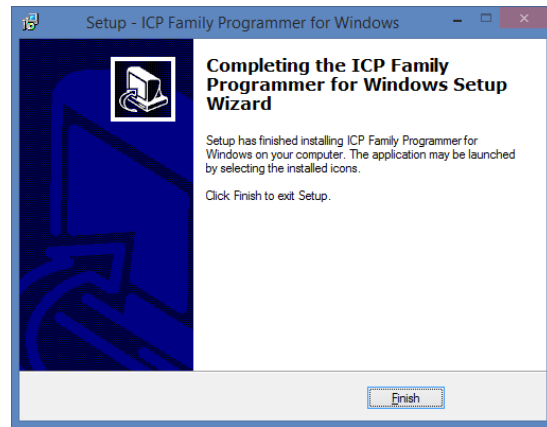
11. Click **Install**:



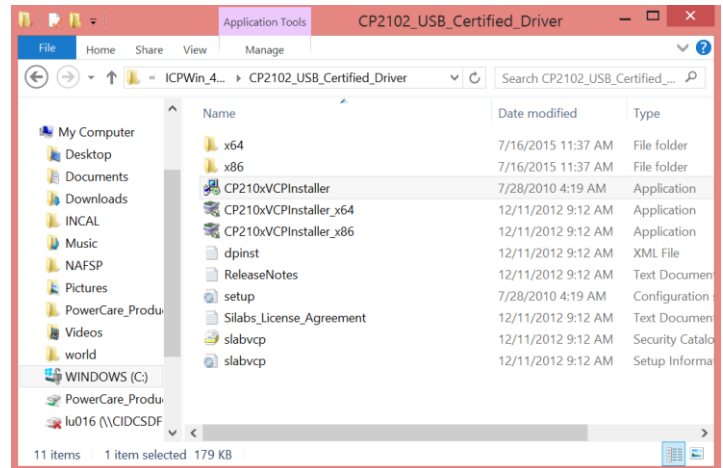
12. Program files will be extracted and installed to your computer.



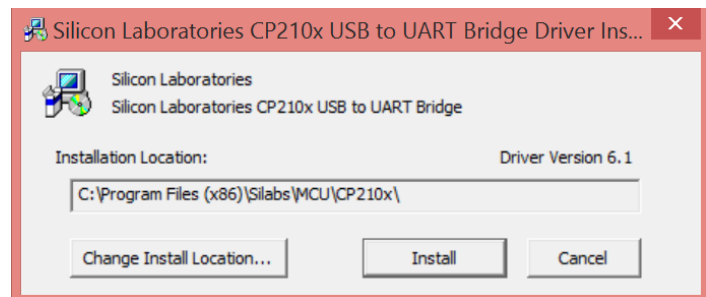
13. Click **Finish**:

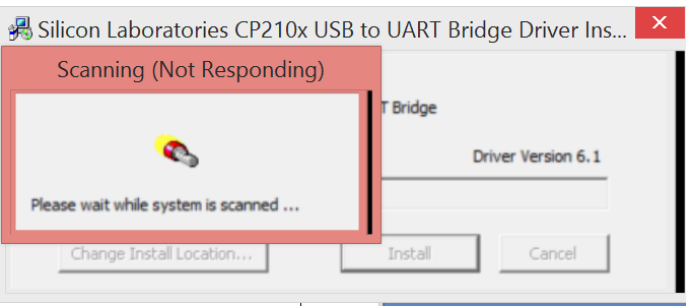
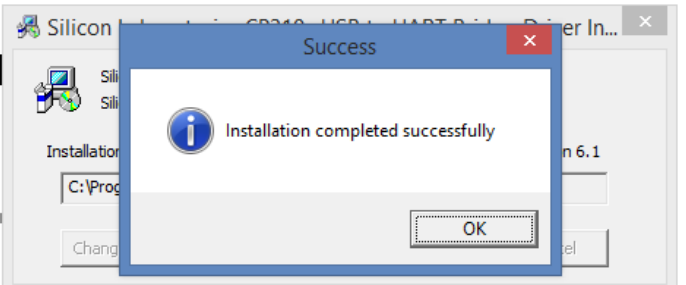
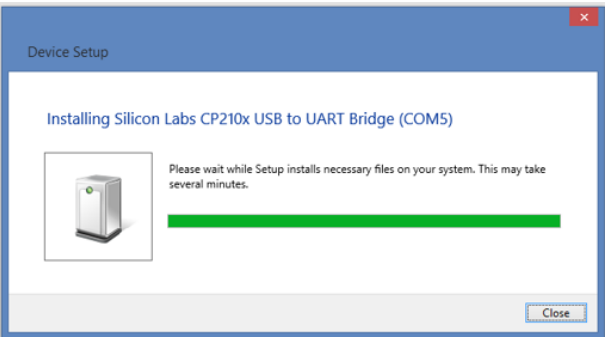


14. Double-click to open the folder “CP2102_USB_Certified_Driver”, then double click the file “CP210xVCPInstaller”



15. Click **Install**:



<p>16. System will be scanned:</p>	 <p>The screenshot shows the 'Silicon Laboratories CP210x USB to UART Bridge Driver Installation' window. A red-bordered dialog box titled 'Scanning (Not Responding)' is overlaid on top. The dialog box contains a lightbulb icon and the text 'Please wait while system is scanned ...'. Below the dialog box, the main window shows 'Driver Version 6.1' and buttons for 'Change Install Location...', 'Install', and 'Cancel'.</p>
<p>17. Click OK once the installation completes successfully</p>	 <p>The screenshot shows the 'Silicon Laboratories CP210x USB to UART Bridge Driver Installation' window. A blue-bordered dialog box titled 'Success' is overlaid on top. The dialog box contains an information icon and the text 'Installation completed successfully'. Below the dialog box, the main window shows 'Driver Version 6.1' and buttons for 'Change Install Location...', 'Install', and 'Cancel'. The 'OK' button in the dialog box is highlighted with a dashed border.</p>
<p>18. Plug the programmer into the USB computer port and Windows will associate the drivers.</p>	 <p>The screenshot shows the 'Device Setup' window. The title bar reads 'Device Setup'. The main content area shows 'Installing Silicon Labs CP210x USB to UART Bridge (COM5)'. Below this, there is a small icon of the device and a progress bar. The text says 'Please wait while Setup installs necessary files on your system. This may take several minutes.' The progress bar is a solid green line. A 'Close' button is located at the bottom right of the window.</p>