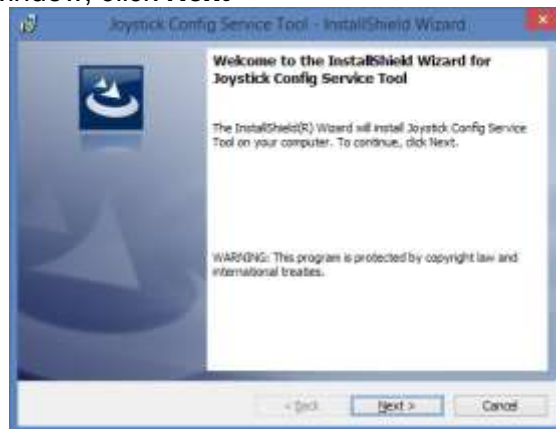


Joystick installation instructions.

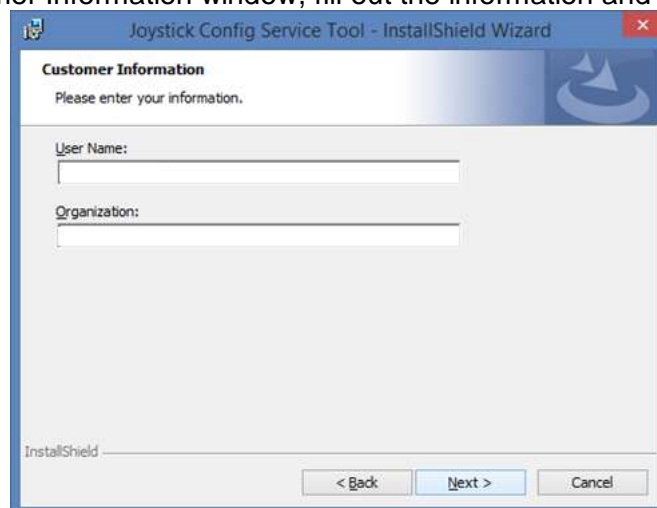
1. Double click on the executable file (Joystick Config Service Tool.exe) to start the installation
 - a. The 'Preparing to Install...' window will open and extract files



2. On the Welcome window, click **Next**



3. On the Customer Information window, fill out the information and click **Next**

A screenshot of the 'Customer Information' window in the Joystick Config Service Tool - InstallShield Wizard. The window has a blue header with the title 'Joystick Config Service Tool - InstallShield Wizard'. On the left, there is a logo featuring a stylized 'J' and 'C' with a crescent moon. The main text reads: 'Customer Information', 'Please enter your information.', 'User Name:', and 'Organization:'. There are two input fields for 'User Name' and 'Organization'. At the bottom, there are three buttons: '< Back', 'Next >', and 'Cancel'. The 'Next >' button is highlighted in blue.

4. On the Select Type, it defaults to Complete. Click **Next**



5. On the Ready to Install, click **Install**



6. On the "Completed" window, click **Finish**



Joystick Registration instructions.

1. The first time the program is open, a Joystick Tool Security window will open.



Note: If the PC ID is not shown, reboot the computer

2. Send an email to Joystick@cummins.com to receive a password.
 - a. In the subject, please include "joystick password needed."