


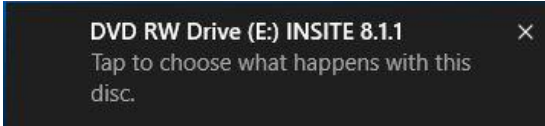



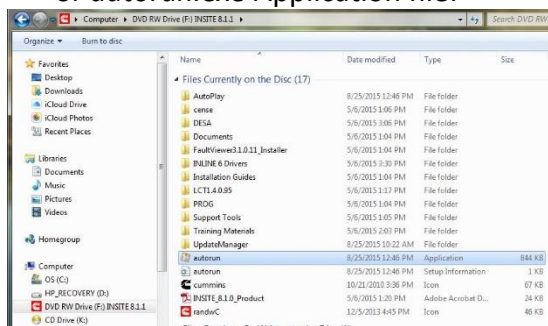
NEW INSITE INSTALLATION INSTRUCTIONS

FROM INSITE 8.1.0 & 8.1.1 INSTALLATION DISC

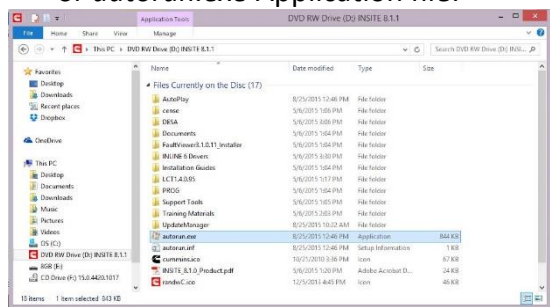
Note: It is recommended to ensure that Microsoft .NET Framework 4.5.2 is installed prior to starting the INSITE installation. Windows 8.1 and Windows 10 will have Microsoft .NET Framework 4.5.2 installed by default or after all the Windows updates have been run.

Windows 7 Operating System	Windows 8 Operating System	Windows 10 Operating System
<p>1. After putting the disc in the DVD drive, click on the <i>Run autorun.exe</i> field:</p> 	<p>1. After putting the disc in the DVD drive, click on the <i>DVD RW Drive</i> prompt:</p>  <p>Then click on the <i>Run autorun.exe</i> link:</p> 	<p>1. After putting the disc in the DVD drive, click on the <i>DVD RW Drive</i> prompt:</p>  <p>Then click on the <i>Run autorun.exe</i> link:</p> 

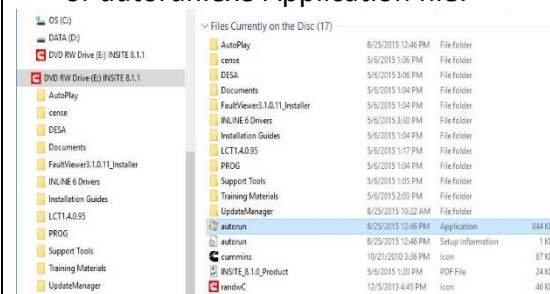
1.1 Alternately, if the AutoPlay is not enabled, open Windows Explorer, find the DVD-ROM drive (could be any letter), and click on the *autorun* or *autorun.exe* Application file:



1.1 Alternately, if the AutoPlay is not enabled, open Windows Explorer, find the DVD-ROM drive (could be any letter), and click on the *autorun* or *autorun.exe* Application file:



1.1 Alternately, if the AutoPlay is not enabled, open Windows Explorer, find the DVD-ROM drive (could be any letter), and click on the *autorun* or *autorun.exe* Application file:



2. In the INSITE Installation Menu that opens, click on *Manual Install Options*:



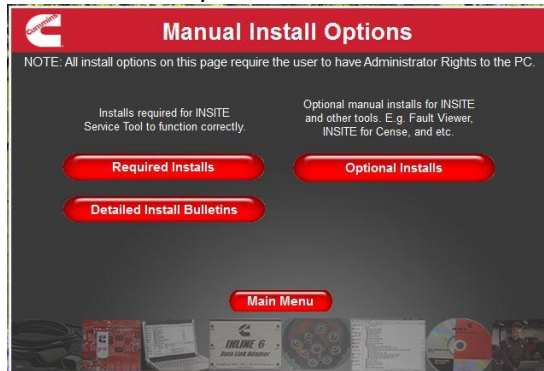
2. In the INSITE Installation Menu that opens, click on *Manual Install Options*:



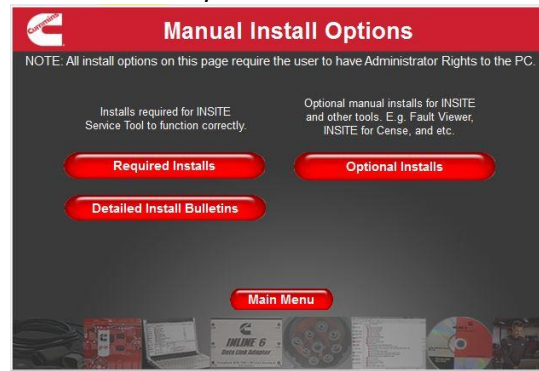
2. In the INSITE Installation Menu that opens, click on *Manual Install Options*:



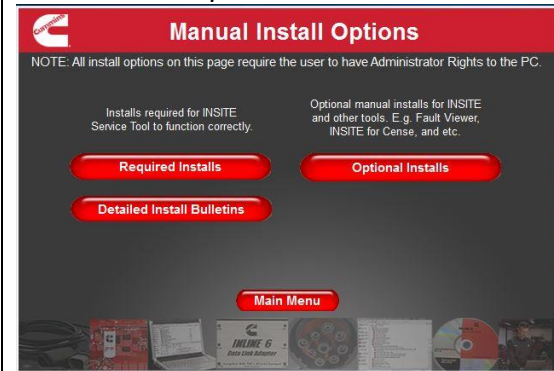
3. In the Manual Install Options screen, click on *Required Installs*:



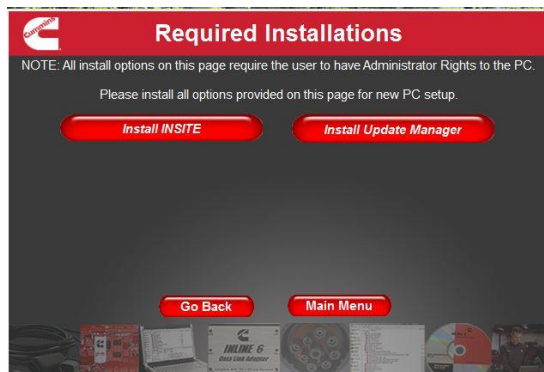
3. In the Manual Install Options screen, click on *Required Installs*:



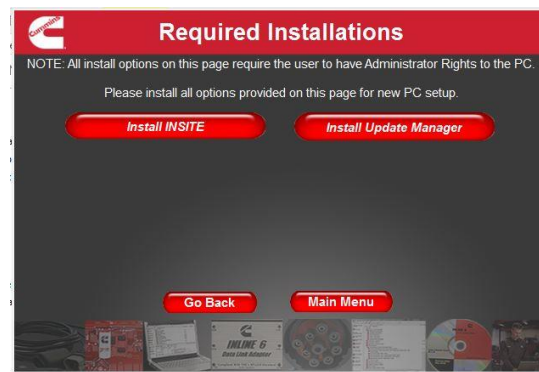
3. In the Manual Install Options screen, click on *Required Installs*:



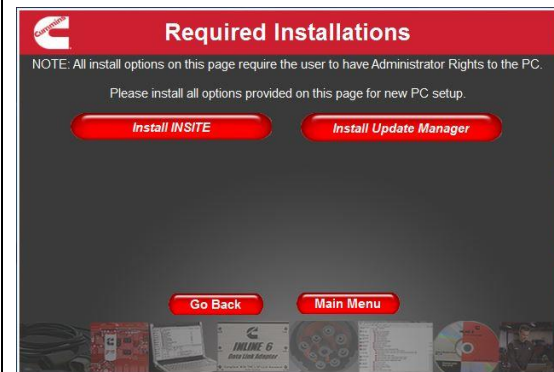
4. In the Required Installations screen, click on *Install INSITE*:



4. In the Required Installations screen, click on *Install INSITE*:



4. In the Required Installations screen, click on *Install INSITE*:



5. Approve the User Account Control prompt.

5. Approve the User Account Control prompt.

5. Approve the User Account Control prompt.

6. In the InstallShield Wizard language selection prompt, select the appropriate language, and then click on *OK*:



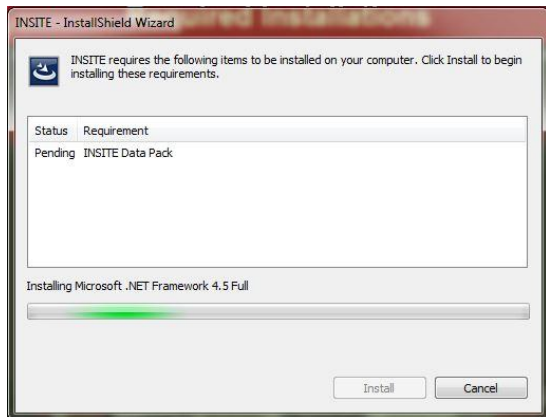
6. In the InstallShield Wizard language selection prompt, select the appropriate language, and then click on *OK*:



6. In the InstallShield Wizard language selection prompt, select the appropriate language, and then click on *OK*:



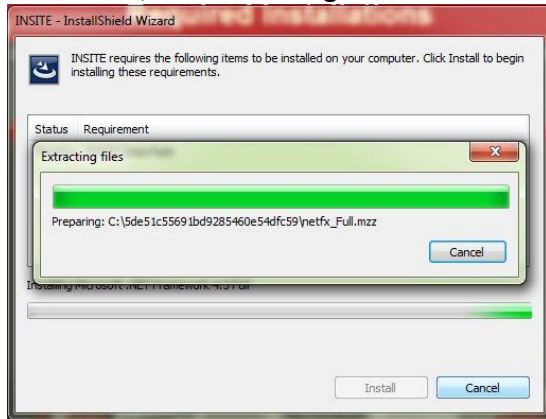
7. If you have Microsoft .NET Framework 4.5 or greater installed, please proceed to step 17. If you still have Microsoft .NET Framework 4.0 installed, you will be asked to upgrade to Microsoft .NET Framework 4.5. Click on Install:



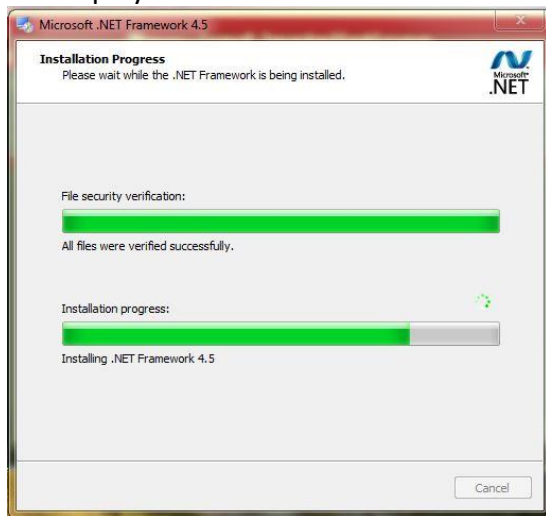
7. Since Windows 8 will already have Microsoft .NET Framework 4.5 or greater installed, please proceed to step 17:

7. Since Windows 10 will already have Microsoft .NET Framework 4.5 or greater installed, please proceed to step 17:

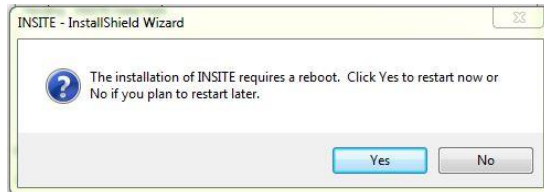
8. In the following InstallShield Wizard screen, files are being extracted:



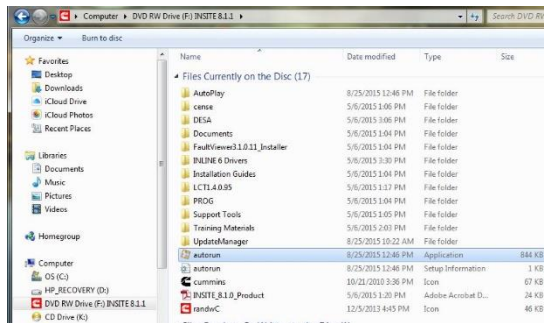
9. The progress of the Microsoft .NET Framework 4.5 installation is being displayed:



10. After installation of Microsoft .NET framework 4.5, you are asked to reboot the computer. Click on Yes to restart:



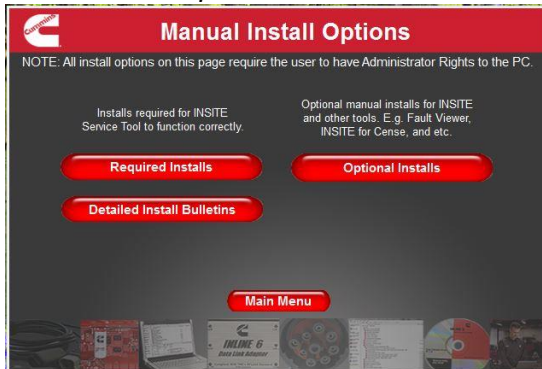
11. After the system has been restarted, you may again need to go into Windows Explorer, and find the *autorun* or *autorun.exe* Application file to restart INSITE 8.1.0 & 8.1.1 installation DVD:



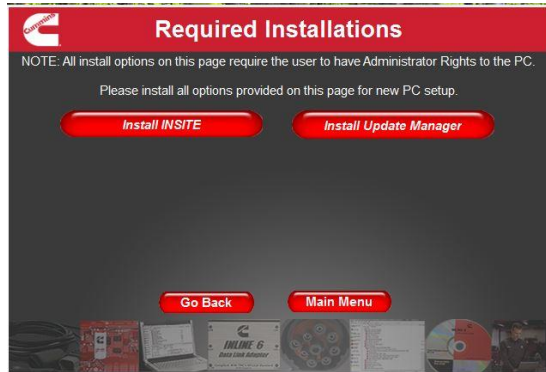
12. In the INSITE Installation Menu that opens, click on *Manual Install Options*:



13. In the Manual Install Options screen, click on *Required Installs*:



14. In the Required Installations screen, click on *Install INSITE*:

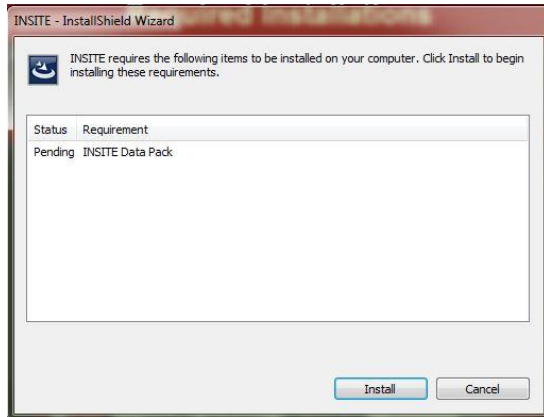


15. Approve the User Account Control prompt.

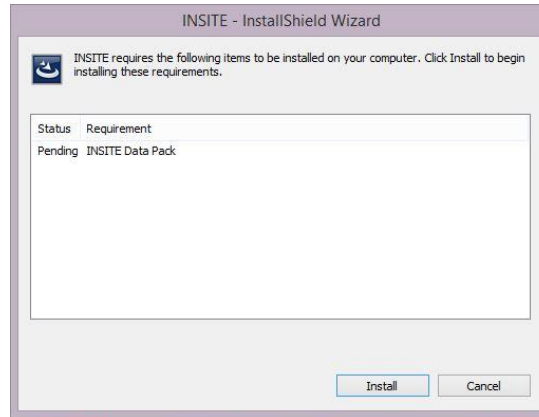
16. In the InstallShield Wizard language selection prompt, select the appropriate language, and then click on *OK*:



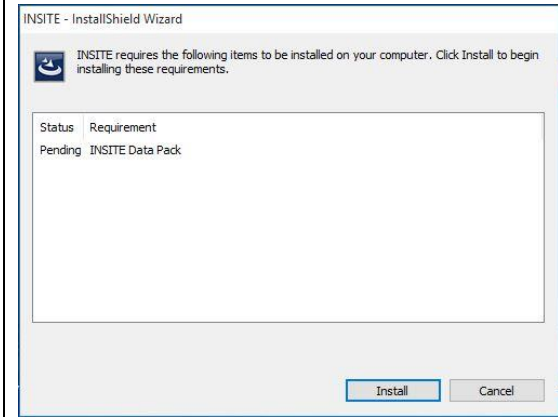
17. Click on the *Install* button to start the INSITE Data Pack installation:



17. Click on the *Install* button to start the INSITE Data Pack installation:



17. Click on the *Install* button to start the INSITE Data Pack installation:



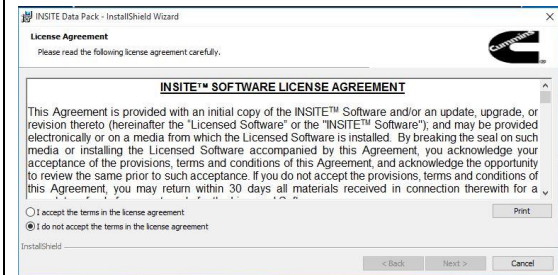
18. In the License Agreement window select the “*I accept the terms in the license agreement*” and then click on *Next*.



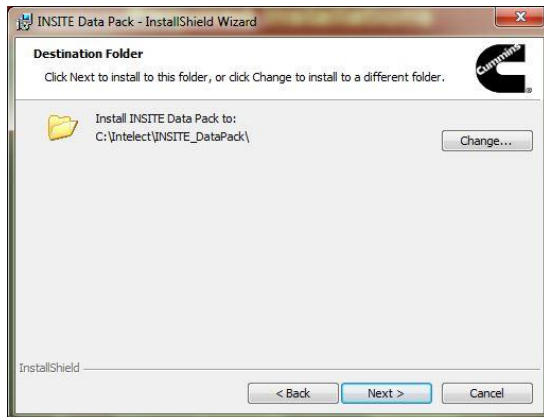
18. In the License Agreement window select the “*I accept the terms in the license agreement*” and then click on *Next*.



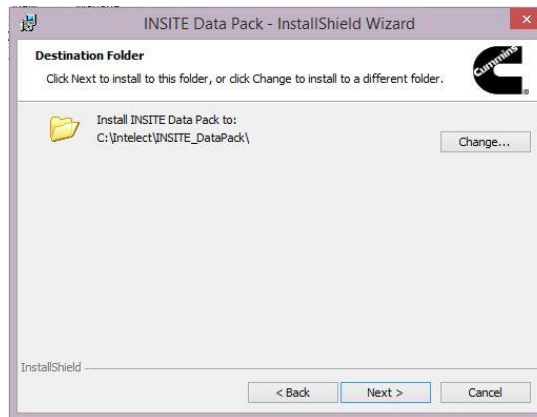
18. In the License Agreement window select the “*I accept the terms in the license agreement*” and then click on *Next*.



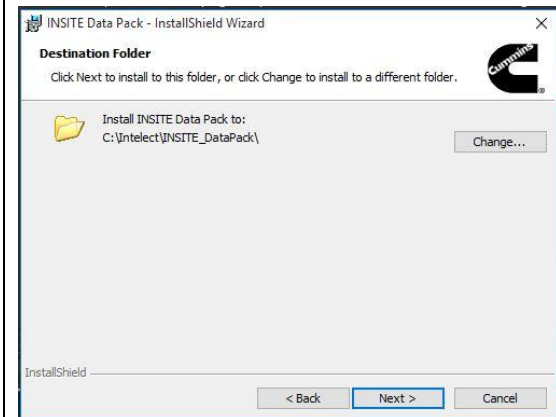
19. In the Destination Folder window, keep the default folder and click on *Next*:



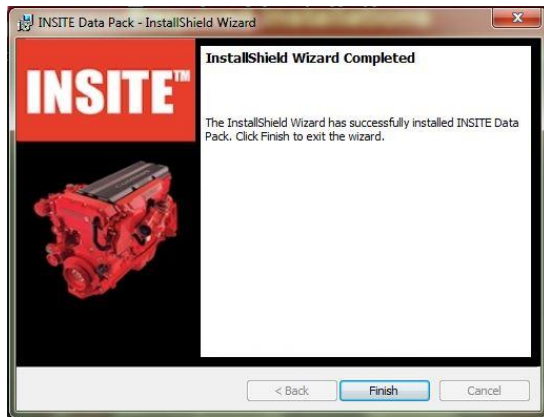
19. In the Destination Folder window, keep the default folder and click on *Next*:



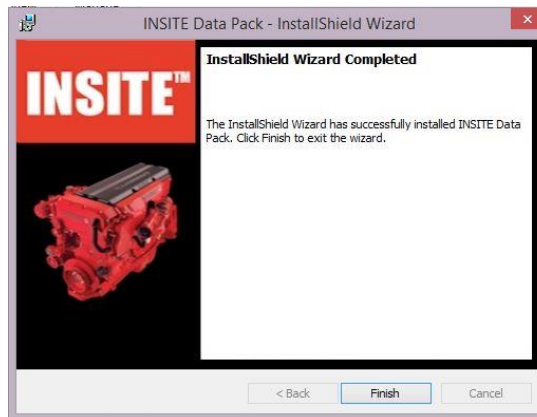
19. In the Destination Folder window, keep the default folder and click on *Next*:



20. After the INSITE Data Pack has been installed, click on *Finish* in the InstallShield Wizard Completed screen:



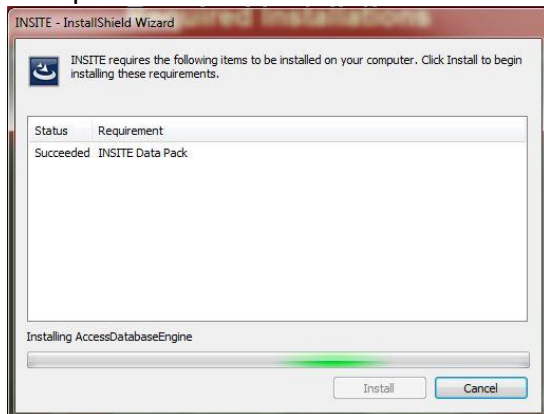
20. After the INSITE Data Pack has been installed, click on *Finish* in the InstallShield Wizard Completed screen:



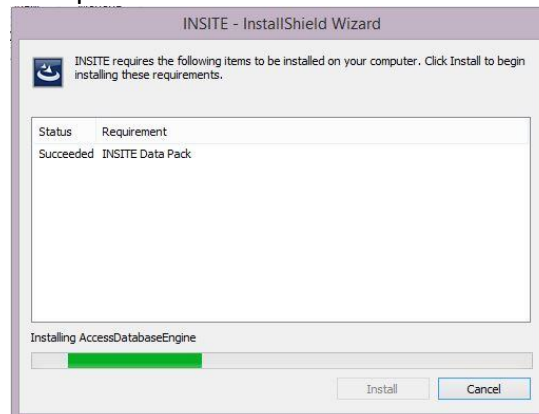
20. After the INSITE Data Pack has been installed, click on *Finish* in the InstallShield Wizard Completed screen:



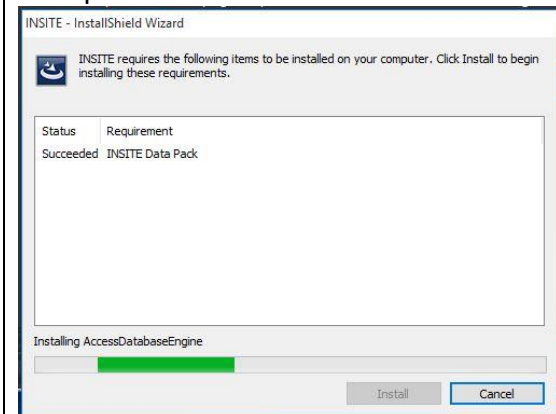
21. If the AccessDatabaseEngine is not yet installed, you will see a status update of its installation:



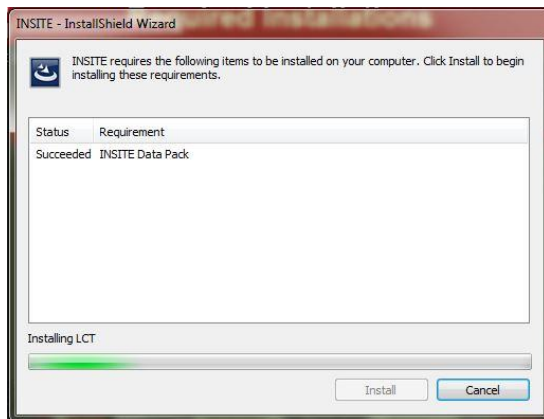
21. If the AccessDatabaseEngine is not yet installed, you will see a status update of its installation:



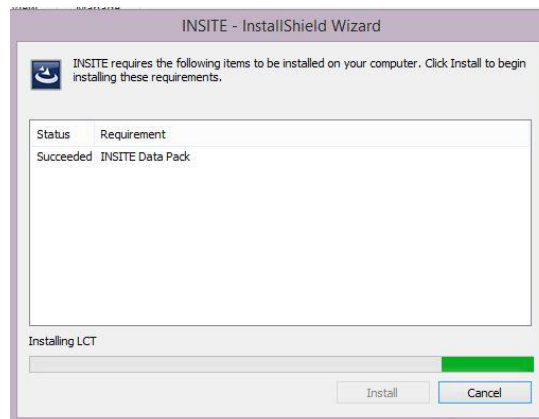
21. If the AccessDatabaseEngine is not yet installed, you will see a status update of its installation:



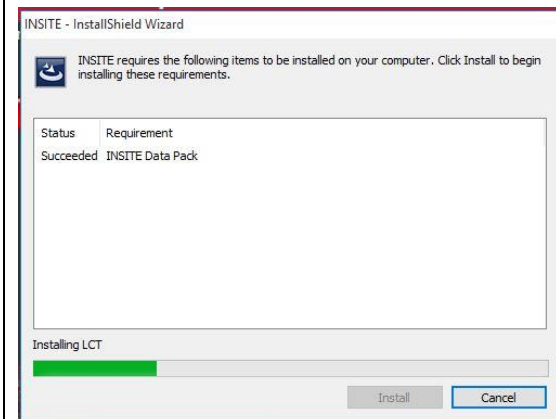
22. Next, you will see a status update on installation of ToolLicensingService and LCT:



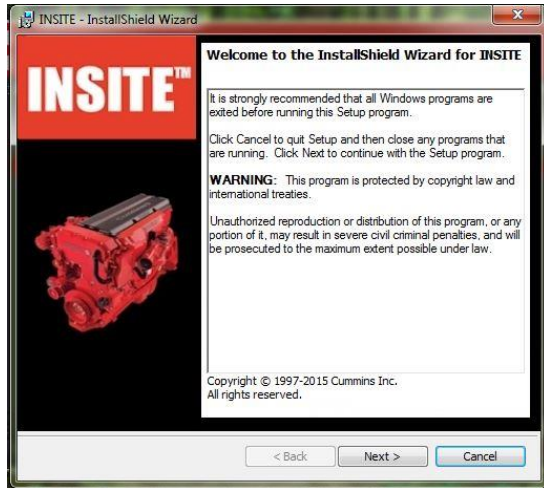
22. Next, you will see a status update on installation of ToolLicensingService and LCT:



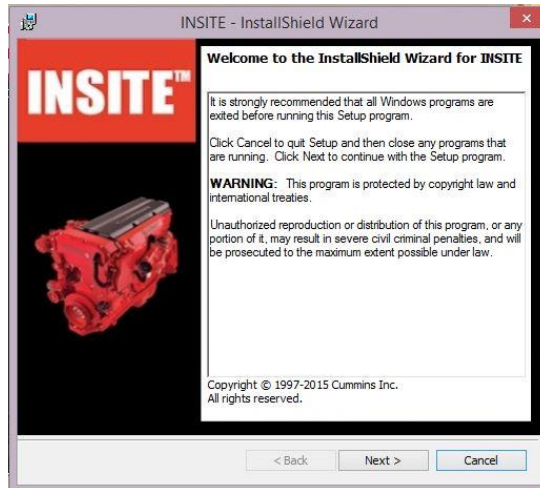
22. Next, you will see a status update on installation of ToolLicensingService and LCT:



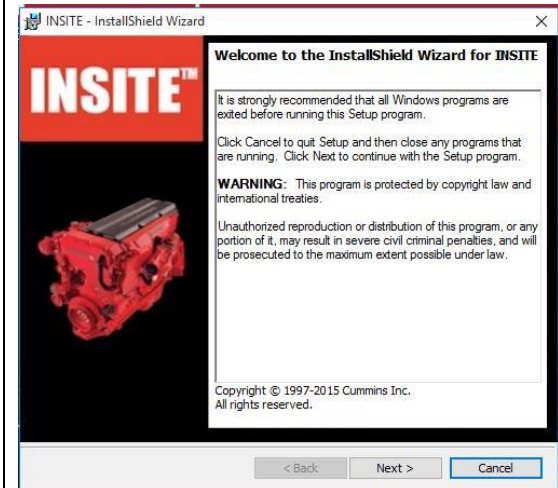
23. After all required installations are complete, click on the *Next* button in the InstallShield Wizard for INSITE screen:



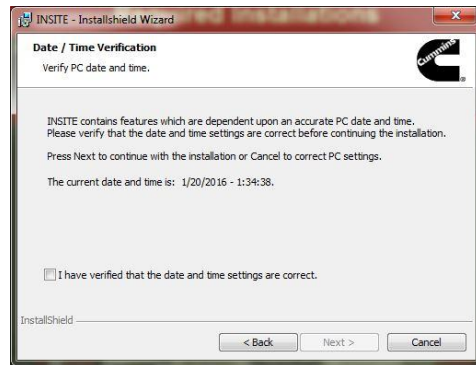
23. After all required installations are complete, click on the *Next* button in the InstallShield Wizard for INSITE screen:



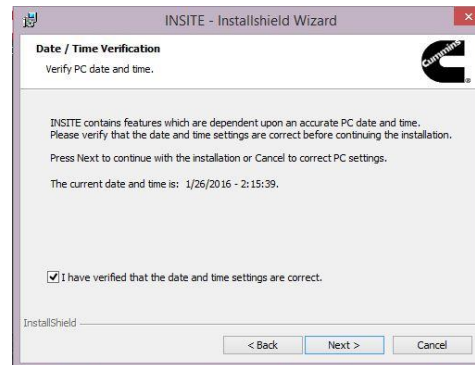
23. After all required installations are complete, click on the *Next* button in the InstallShield Wizard for INSITE screen:



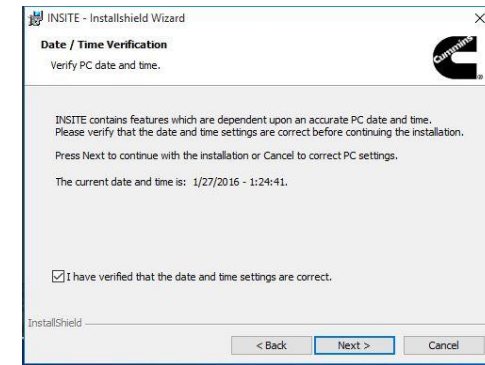
24. You will be asked to verify the date/time. If the date/time is correct, place a check mark in the checkbox "*I have verified that the date and time settings are correct.*" Then, click on *Next*:



24. You will be asked to verify the date/time. If the date/time is correct, place a check mark in the checkbox "*I have verified that the date and time settings are correct.*" Then, click on *Next*:



24. You will be asked to verify the date/time. If the date/time is correct, place a check mark in the checkbox "*I have verified that the date and time settings are correct.*" Then, click on *Next*:



25. Select the radio button *“I accept the terms in the license agreement”* to accept the INSITE Software License Agreement. Click on *Next*:



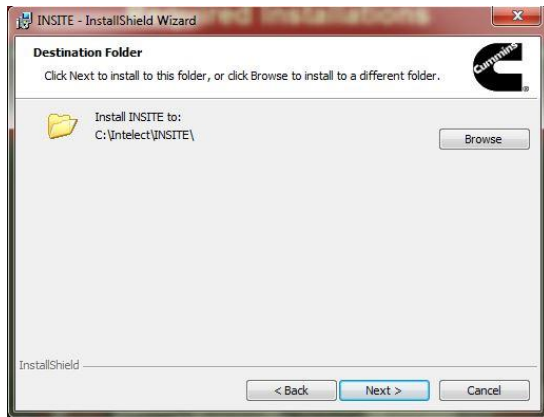
25. Select the radio button *“I accept the terms in the license agreement”* to accept the INSITE Software License Agreement. Click on *Next*:



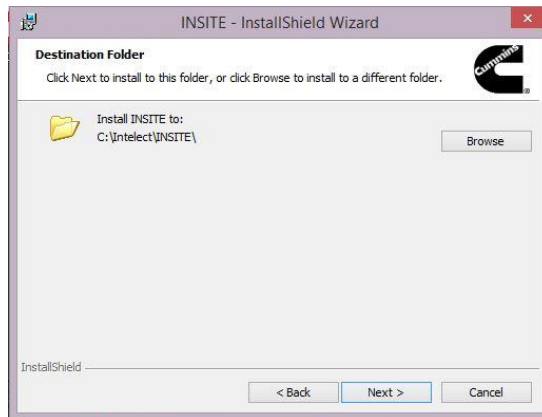
25. Select the radio button *“I accept the terms in the license agreement”* to accept the INSITE Software License Agreement. Click on *Next*:



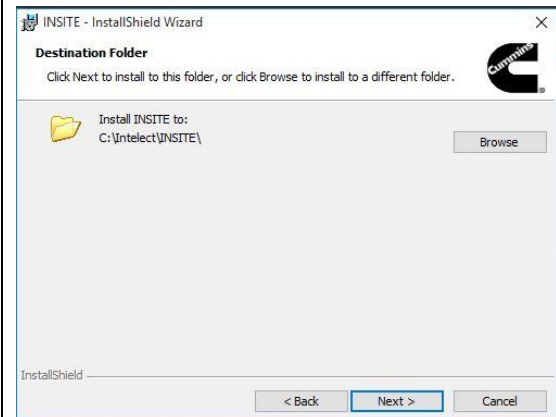
26. Click on *Next* to accept the default INSITE installation folder:



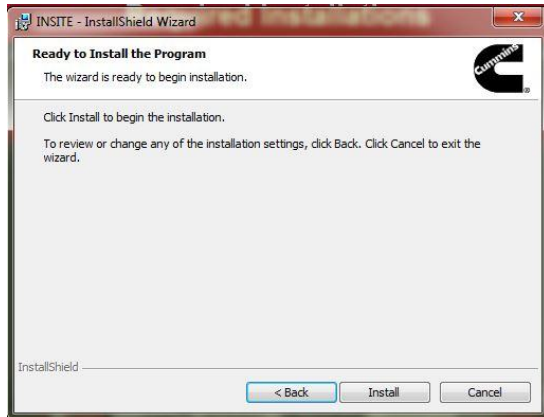
26. Click on *Next* to accept the default INSITE installation folder:



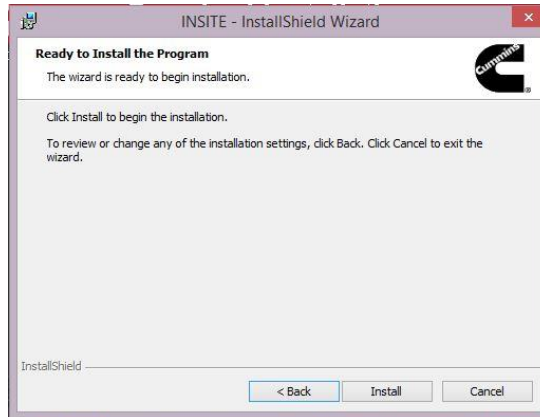
26. Click on *Next* to accept the default INSITE installation folder:



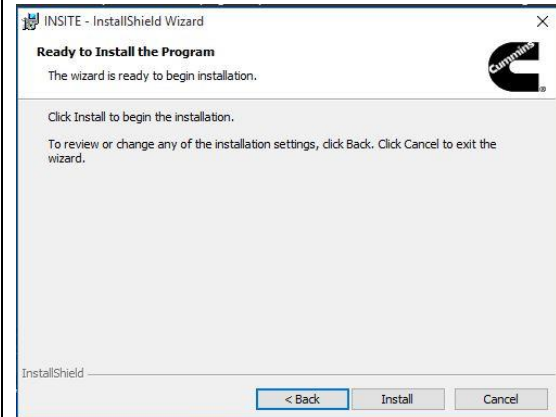
27. Click on *Install* to begin the INSITE installation:



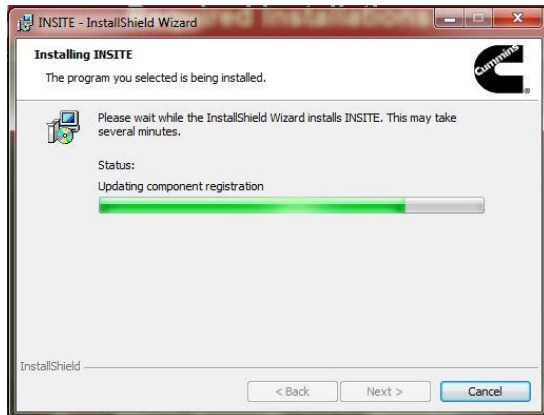
27. Click on *Install* to begin the INSITE installation:



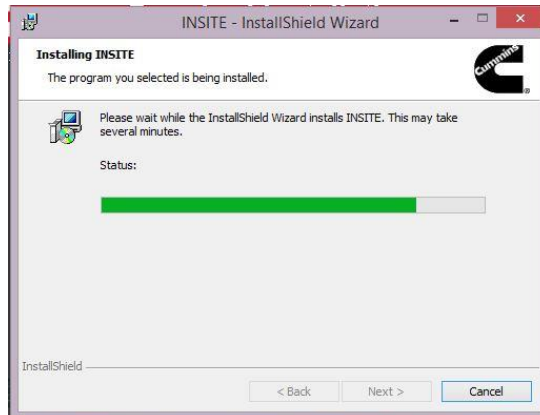
27. Click on *Install* to begin the INSITE installation:



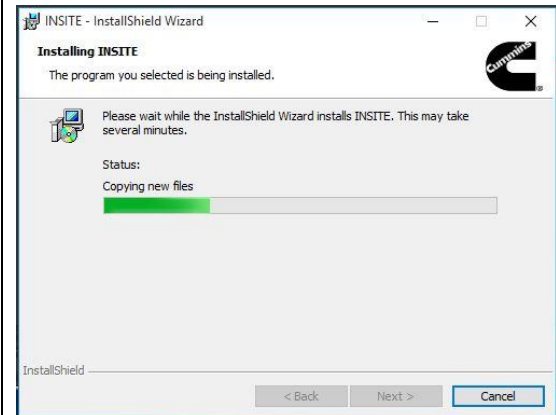
28. During the installation, you will see a status update for the INSITE installation:



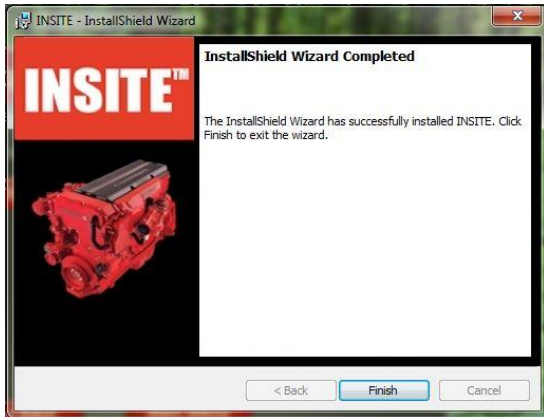
28. During the installation, you will see a status update for the INSITE installation:



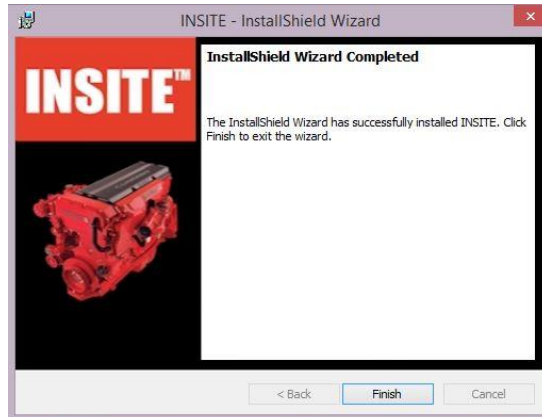
28. During the installation, you will see a status update for the INSITE installation:



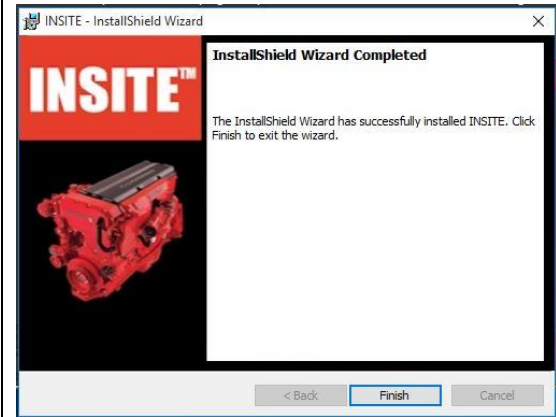
29. When the INSITE installation is complete, click on *Finish* in the InstallShield Wizard Completed screen:



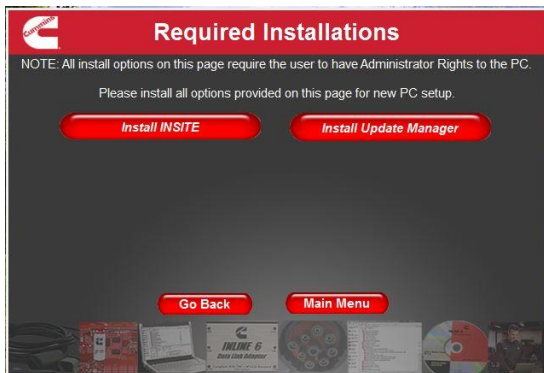
29. When the INSITE installation is complete, click on *Finish* in the InstallShield Wizard Completed screen:



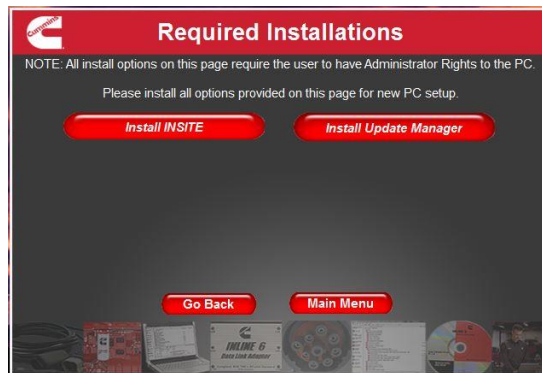
29. When the INSITE installation is complete, click on *Finish* in the InstallShield Wizard Completed screen:



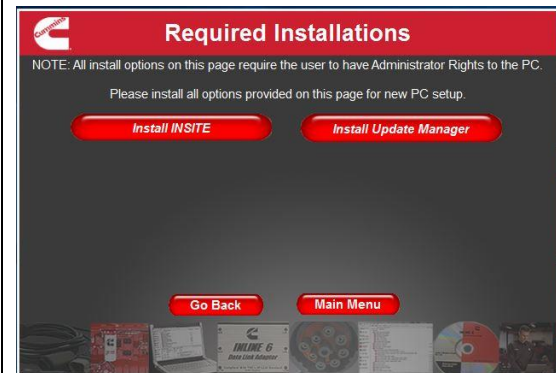
30. In the Required Installations window, click on the *Install Update Manager* button:



30. In the Required Installations window, click on the *Install Update Manager* button:



30. In the Required Installations window, click on the *Install Update Manager* button:



31. Approve the User Account Control prompt.

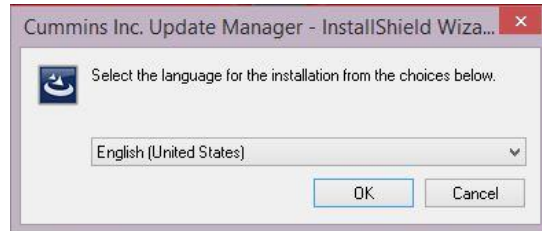
31. Approve the User Account Control prompt.

31. Approve the User Account Control prompt.

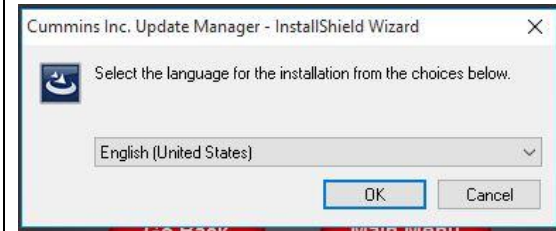
32. In the InstallShield Wizard language selection prompt, select the appropriate language, and then click on **OK**:



32. In the InstallShield Wizard language selection prompt, select the appropriate language, and then click on **OK**:



32. In the InstallShield Wizard language selection prompt, select the appropriate language, and then click on **OK**:



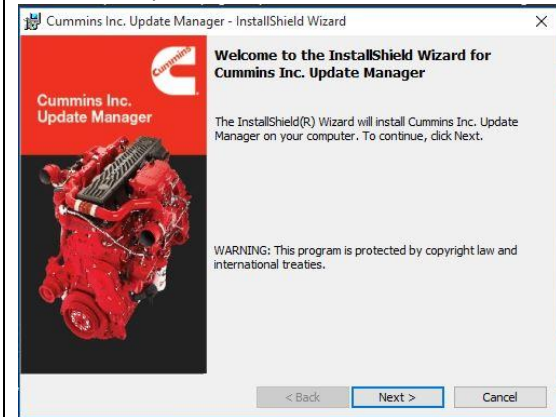
33. In the following InstallShield Wizard screen, click on **Next**:



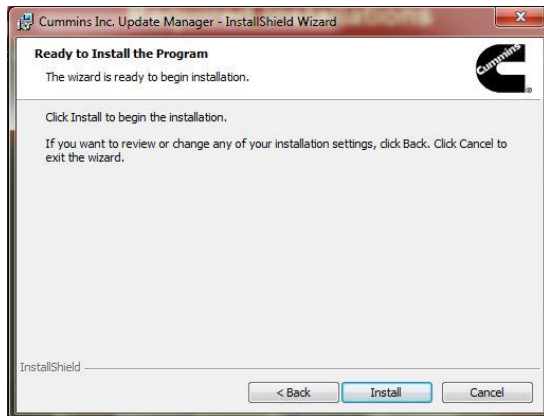
33. In the following InstallShield Wizard screen, click on **Next**:



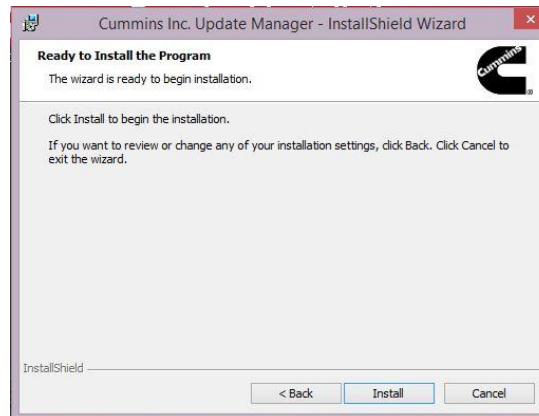
33. In the following InstallShield Wizard screen, click on **Next**:



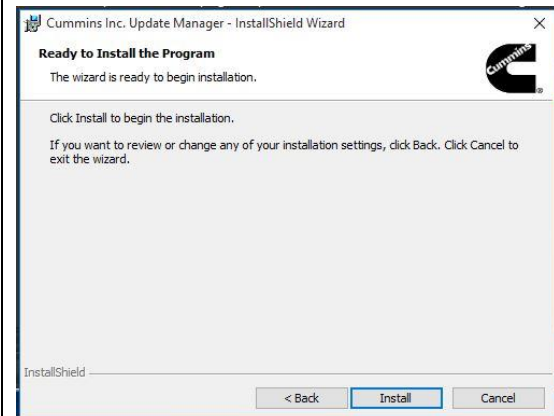
34. In the following Installation screen, click on *Install* to start the installation:



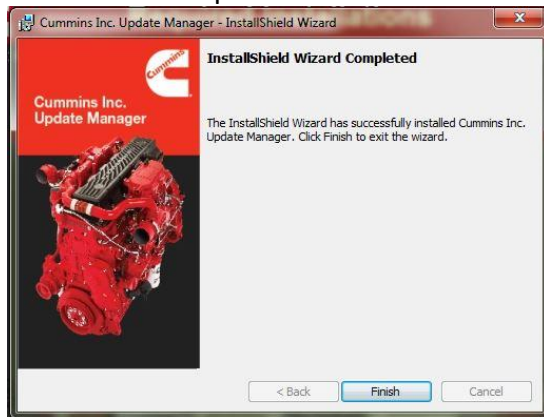
34. In the following Installation screen, click on *Install* to start the installation:



34. In the following Installation screen, click on *Install* to start the installation:



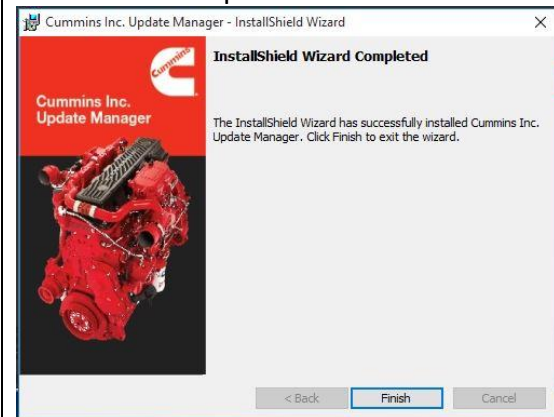
35. Once the installation is completed, click on *Finish* in the InstallShield Wizard Completed screen:



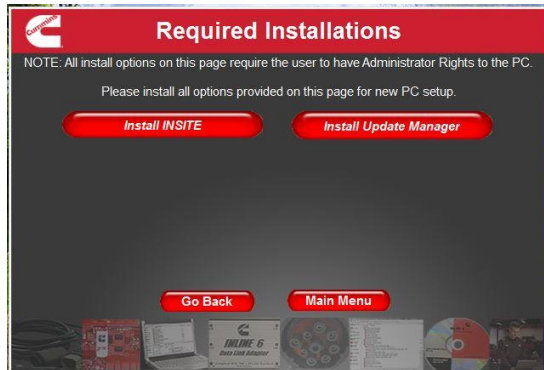
35. Once the installation is completed, click on *Finish* in the InstallShield Wizard Completed screen:



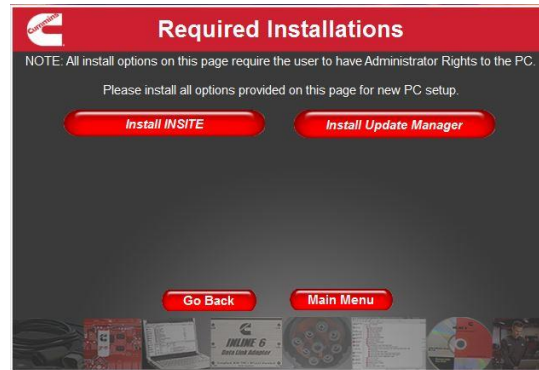
35. Once the installation is completed, click on *Finish* in the InstallShield Wizard Completed screen:



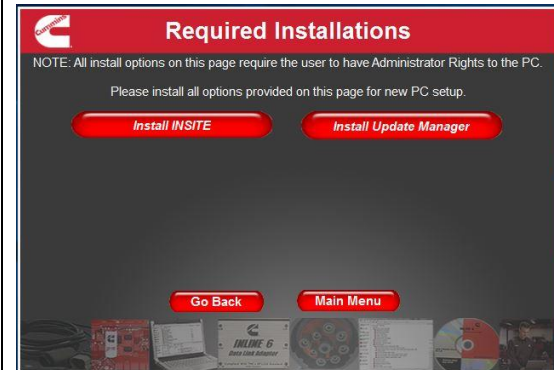
36. When you return to the Required Installations screen, click on *Main Menu*:



36. When you return to the Required Installations screen, click on *Main Menu*:



36. When you return to the Required Installations screen, click on *Main Menu*:



37. In the INSITE Installation Menu, click on *Upgrade INSITE*:



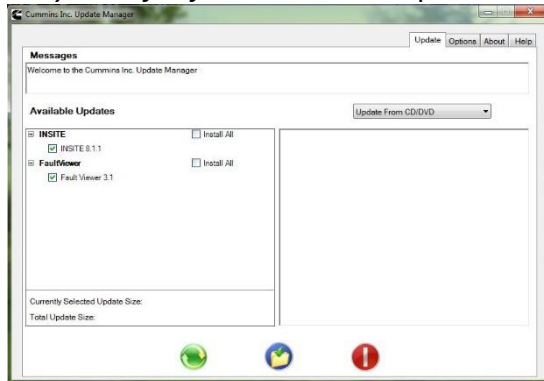
37. In the INSITE Installation Menu, click on *Upgrade INSITE*:



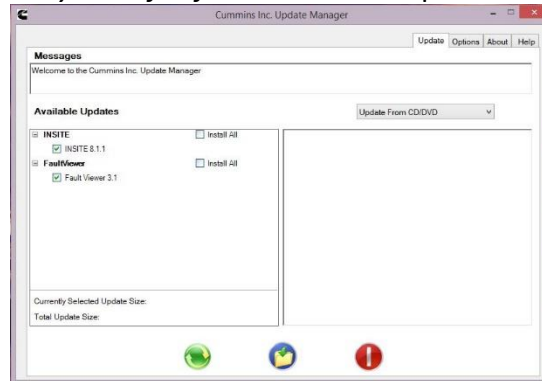
37. In the INSITE Installation Menu, click on *Upgrade INSITE*:



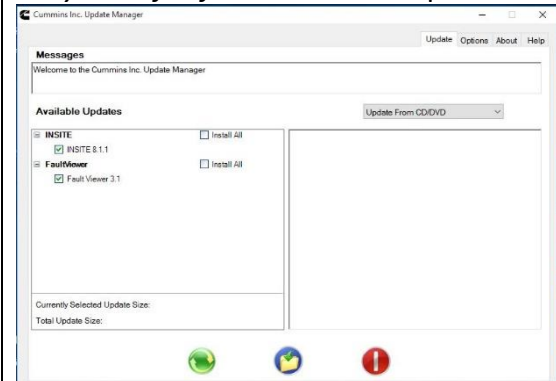
38. In the Cummins Inc. Update Manager click on the *middle blue button with yellow file folder* to Install Updates:



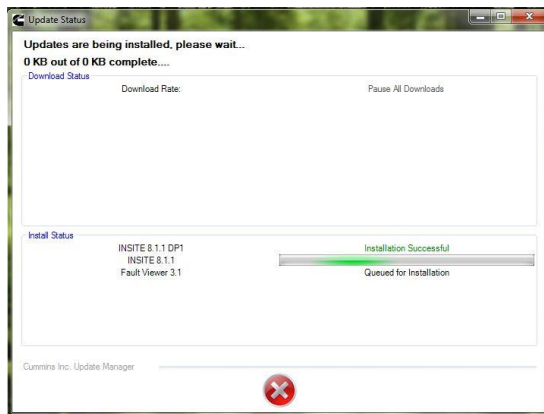
38. In the Cummins Inc. Update Manager click on the *middle blue button with yellow file folder* to Install Updates:



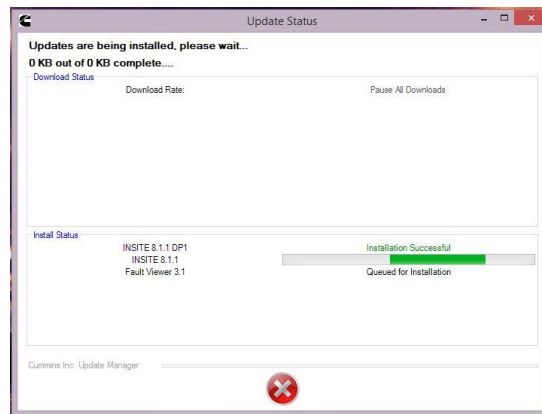
38. In the Cummins Inc. Update Manager click on the *middle blue button with yellow file folder* to Install Updates:



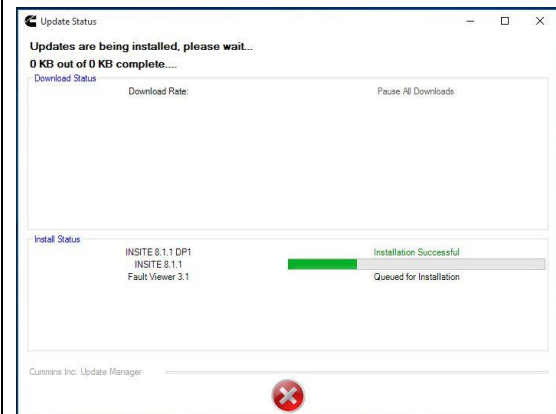
39. The Update Manager will show the progress of the installation of INSITE 8.1.1 and other files:



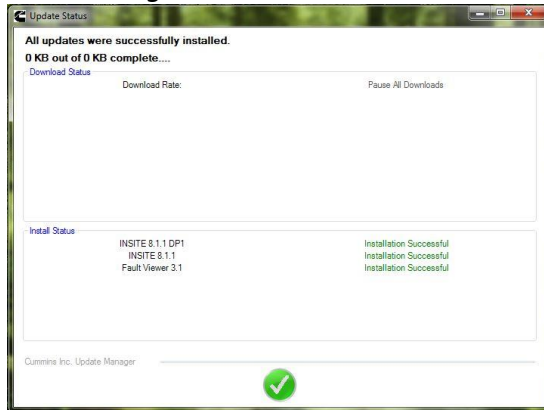
39. The Update Manager will show the progress of the installation of INSITE 8.1.1 and other files:



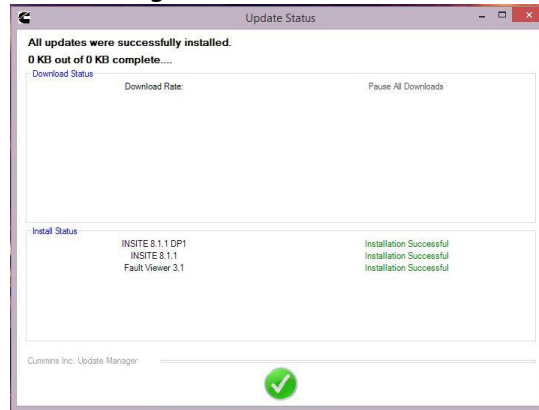
39. The Update Manager will show the progress of the installation of INSITE 8.1.1 and other files:



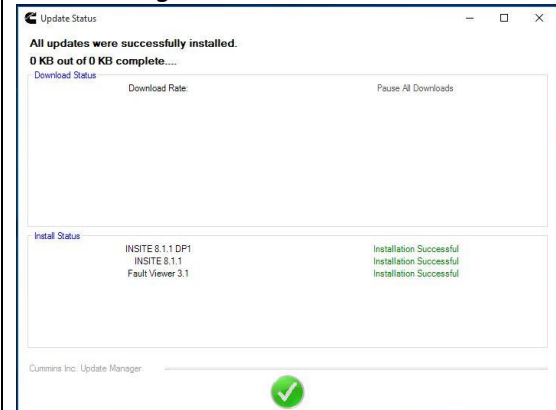
40. Once the updates are complete, click on the *green check mark*:



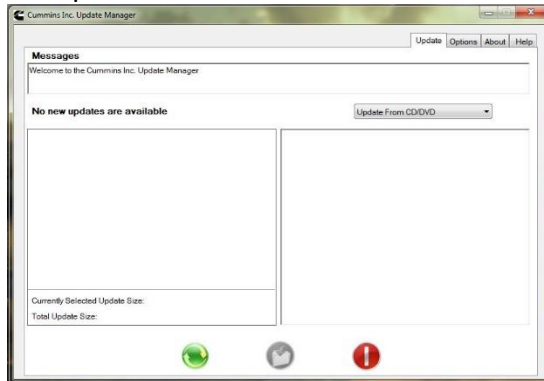
40. Once the updates are complete, click on the *green check mark*:



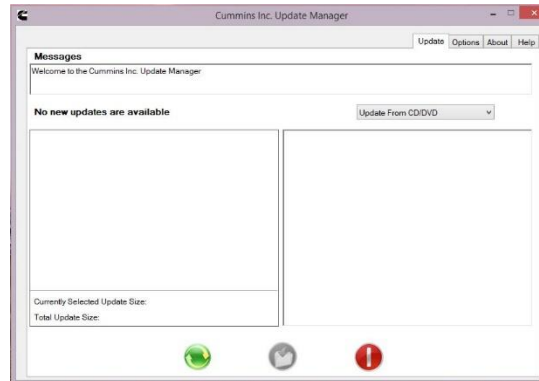
40. Once the updates are complete, click on the *green check mark*:



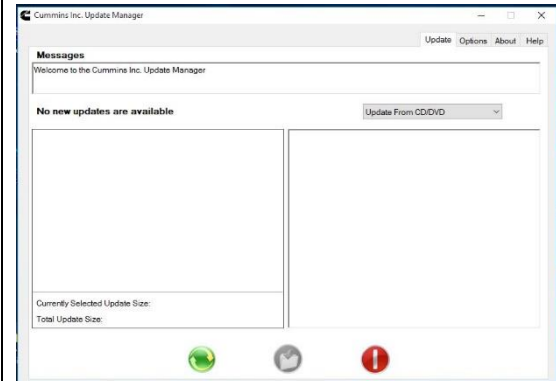
41. It will now tell you that No new updates are available:



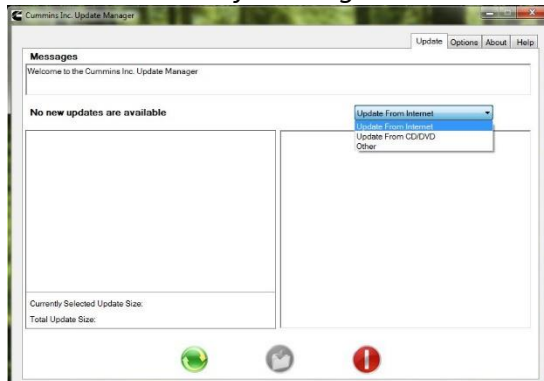
41. It will tell you that No new updates are available:



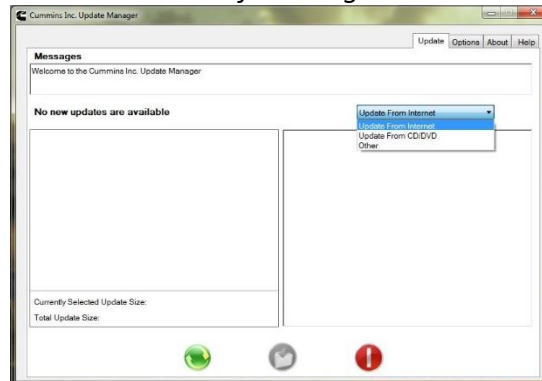
41. It will tell you that No new updates are available:



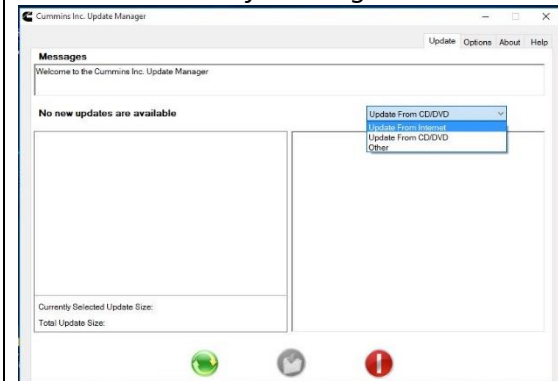
42. You will now need to change the drop-down box in the top right-hand of the window to point to the Internet. At this point, you will need a good and stable Internet connection. Click on the *left-hand green button*:



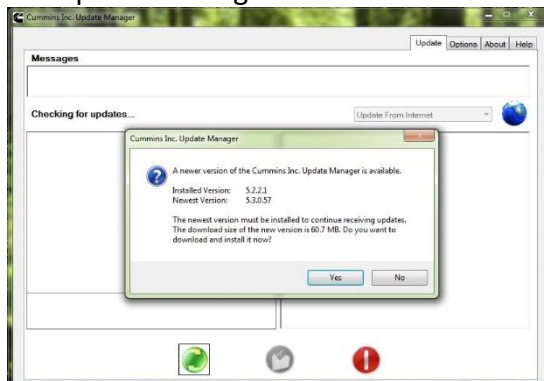
42. You will now need to change the drop-down box in the top right-hand of the window to point to the Internet. At this point, you will need a good and stable Internet connection. Click on the *left-hand green button*:



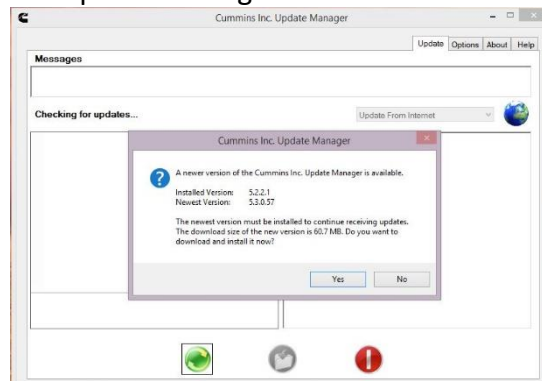
42. You will now need to change the drop-down box in the top right-hand of the window to point to the Internet. At this point, you will need a good and stable Internet connection. Click on the *left-hand green button*:



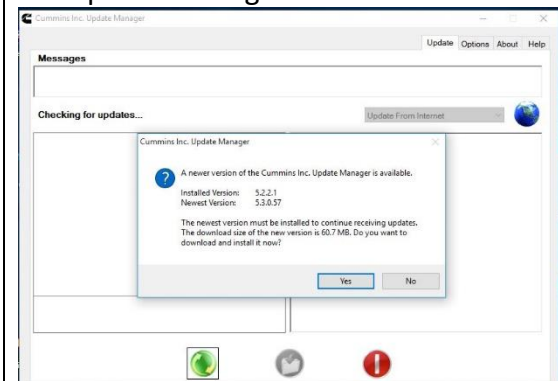
43. The Cummins Inc. Update Manager will update itself. Click Yes in this prompt to update the Cummins Inc. Update Manager:



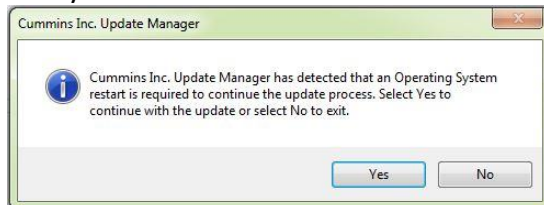
43. The Cummins Inc. Update Manager will update itself. Click Yes in this prompt to update the Cummins Inc. Update Manager:



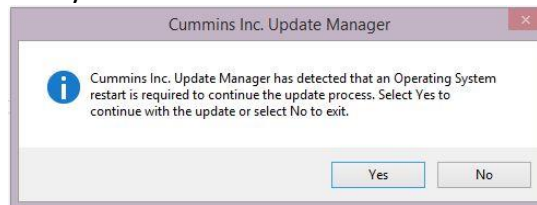
43. The Cummins Inc. Update Manager will update itself. Click Yes in this prompt to update the Cummins Inc. Update Manager:



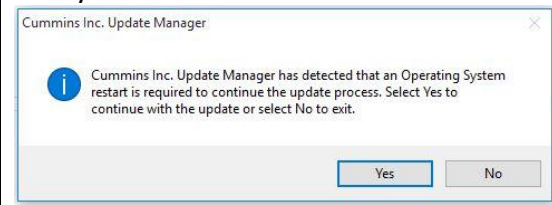
44. You will see a prompt requesting you to restart the operating system. Click on *Yes*, but it may or may not restart the operating system, and you are not required to restart the operating system:



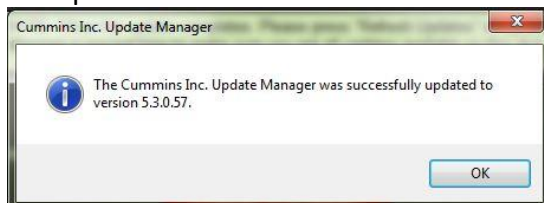
44. You will see a prompt requesting you to restart the operating system. Click on *Yes*, but it may or may not restart the operating system, and you are not required to restart the operating system:



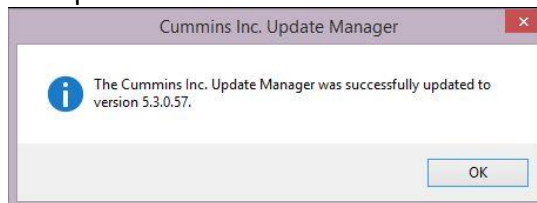
44. You will see a prompt requesting you to restart the operating system. Click on *Yes*, but it may or may not restart the operating system, and you are not required to restart the operating system:



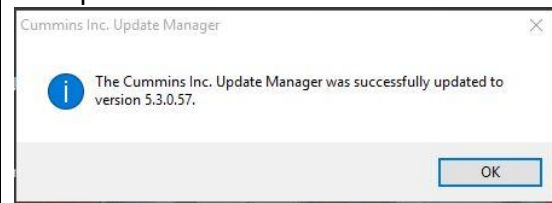
45. Click on *OK* in the prompt notifying the user that the Cummins Inc. Update Manager was successfully updated:



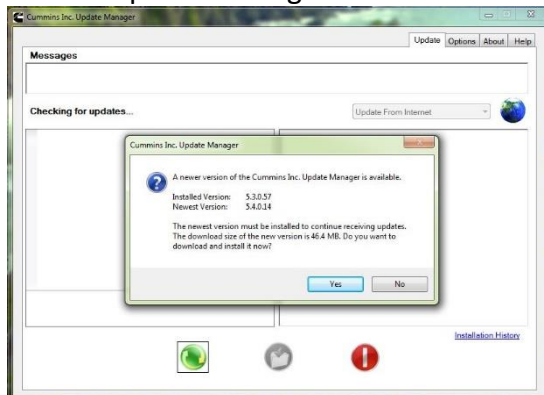
45. Click on *OK* in the prompt notifying the user that the Cummins Inc. Update Manager was successfully updated:



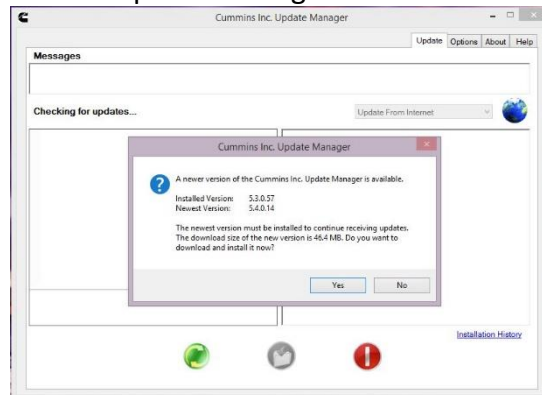
45. Click on *OK* in the prompt notifying the user that the Cummins Inc. Update Manager was successfully updated:



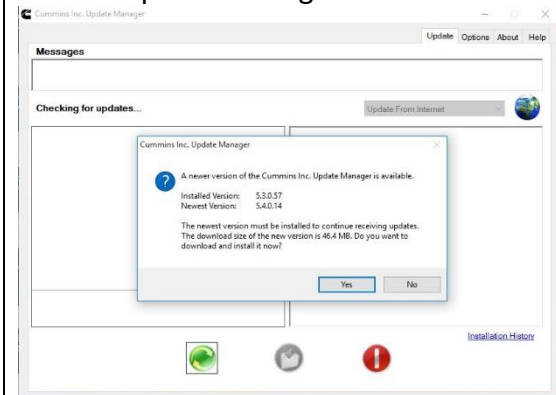
46. The Cummins Inc. Update Manager will again update itself. Click Yes in this prompt to update the Cummins Inc. Update Manager:



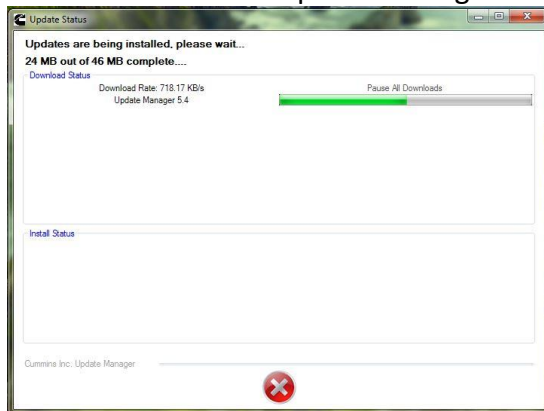
46. The Cummins Inc. Update Manager will again update itself. Click Yes in this prompt to update the Cummins Inc. Update Manager:



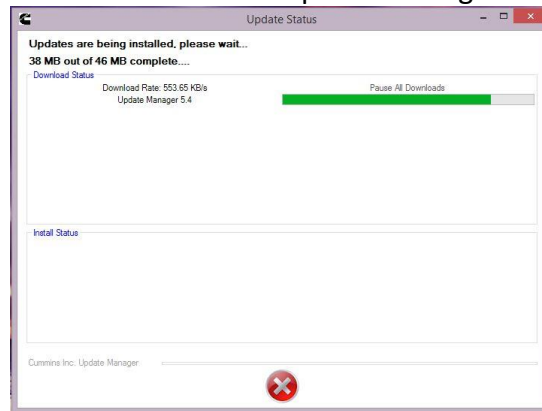
46. The Cummins Inc. Update Manager will again update itself. Click Yes in this prompt to update the Cummins Inc. Update Manager:



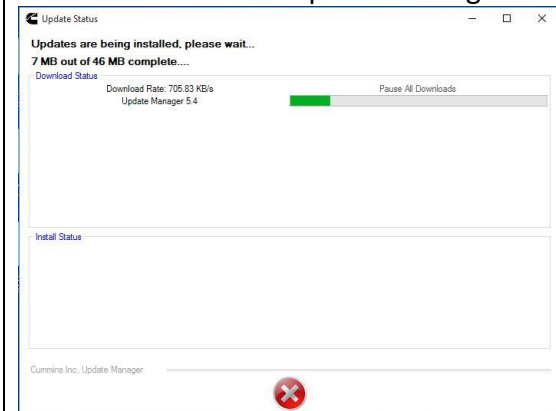
47. The Cummins Inc. Update Manager will show the progress of the download of the Update Manager:



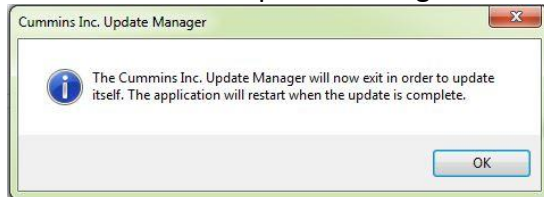
47. The Cummins Inc. Update Manager will show the progress of the download of the Update Manager:



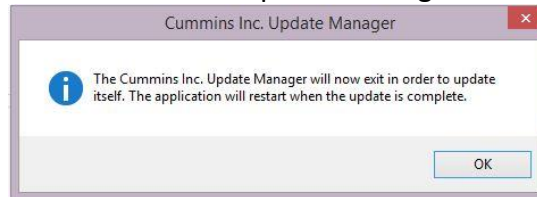
47. The Cummins Inc. Update Manager will show the progress of the download of the Update Manager:



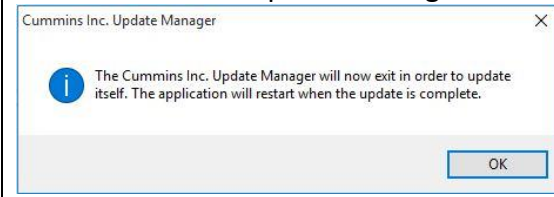
48. Click on *OK* in the prompt to exit the Cummins Inc. Update Manager:



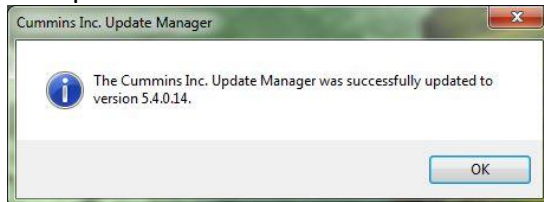
48. Click on *OK* in the prompt to exit the Cummins Inc. Update Manager:



48. Click on *OK* in the prompt to exit the Cummins Inc. Update Manager:



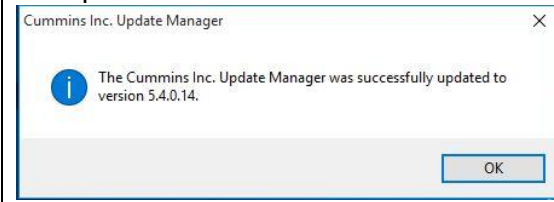
49. Click on *OK* in the prompt notifying the user that the Cummins Inc. Update Manager was successfully updated:



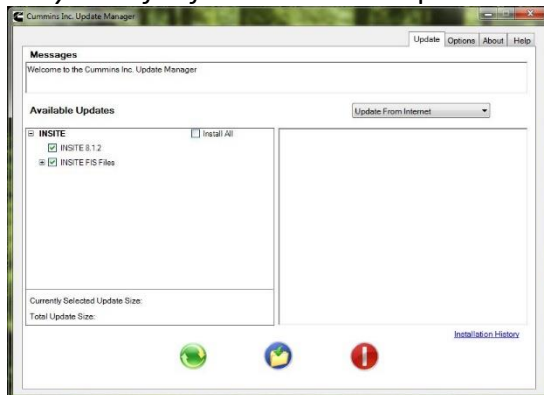
49. Click on *OK* in the prompt notifying the user that the Cummins Inc. Update Manager was successfully updated:



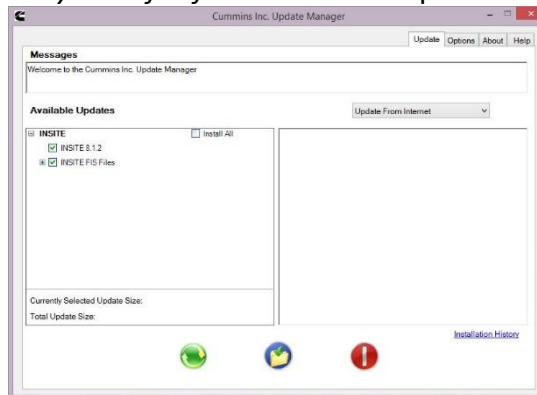
49. Click on *OK* in the prompt notifying the user that the Cummins Inc. Update Manager was successfully updated:



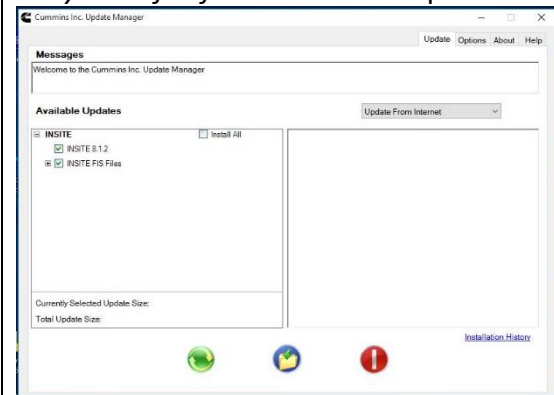
50. In the Cummins Inc. Update Manager click on the *middle blue button with yellow file folder* to Install Updates:



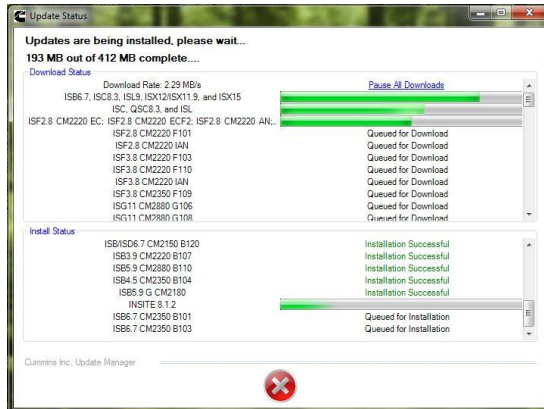
50. In the Cummins Inc. Update Manager click on the *middle blue button with yellow file folder* to Install Updates:



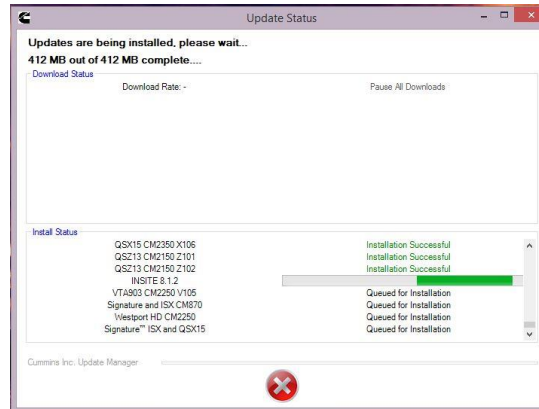
50. In the Cummins Inc. Update Manager click on the *middle blue button with yellow file folder* to Install Updates:



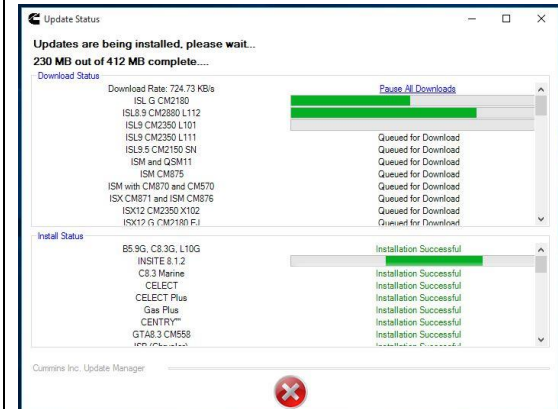
51. The Update Manager will show the progress of the downloads and installation of INSITE 8.1.2 and other files:



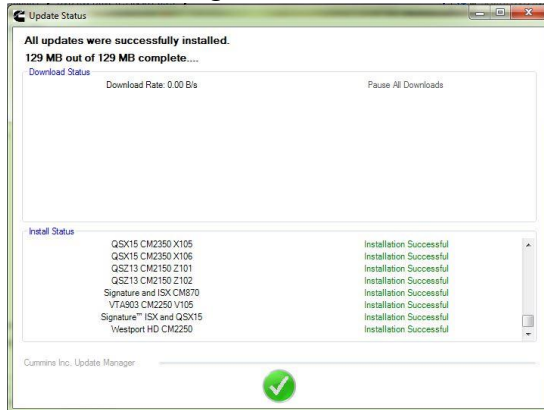
51. The Update Manager will show the progress of the downloads and installation of INSITE 8.1.2 and other files:



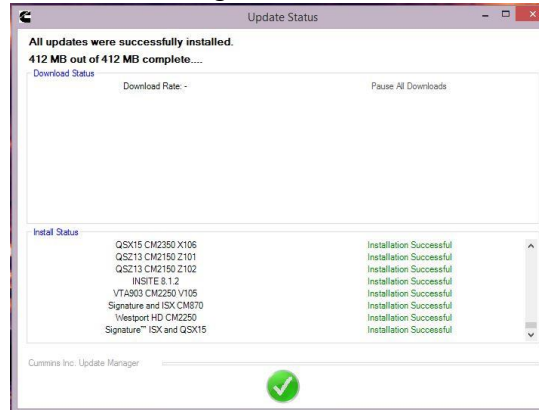
51. The Update Manager will show the progress of the downloads and installation of INSITE 8.1.2 and other files:



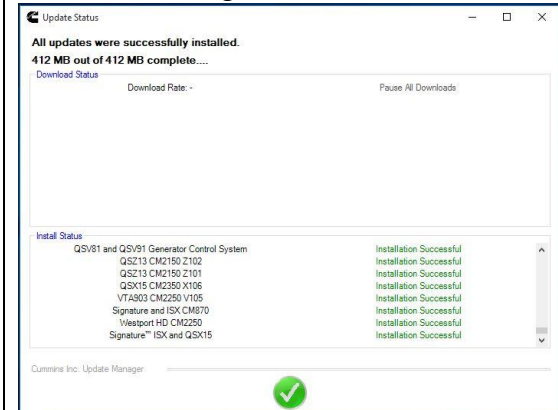
52. Once all the updates are complete, click on the *green check mark*:



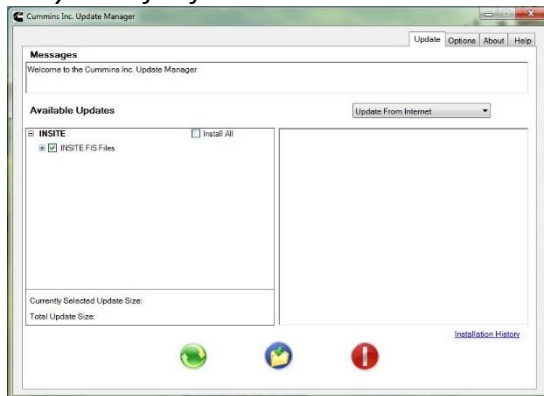
52. Once all the updates are complete, click on the *green check mark*:



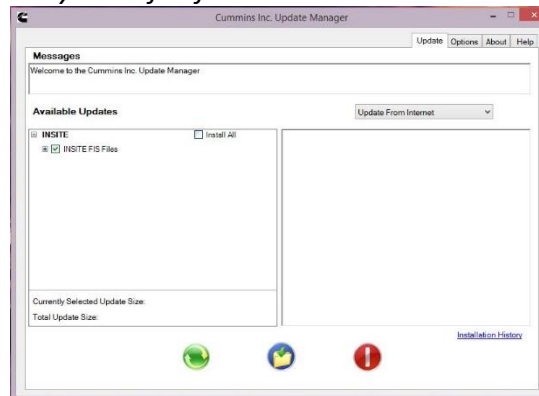
52. Once all the updates are complete, click on the *green check mark*:



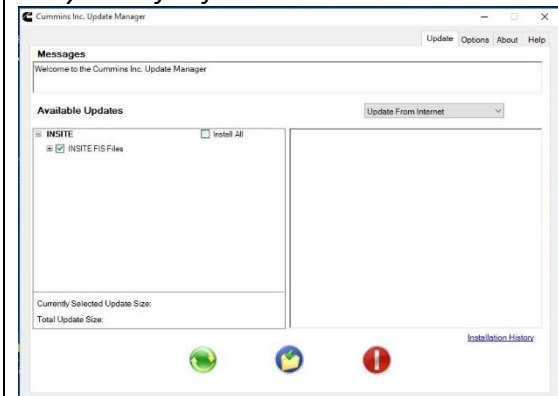
53. You may be prompted again to update some FIS files. Again, click on the *middle blue button with the yellow file folder*:



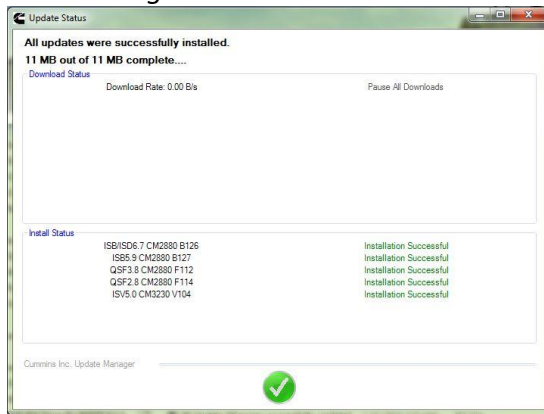
53. You may be prompted again to update some FIS files. Again, click on the *middle blue button with the yellow file folder*:



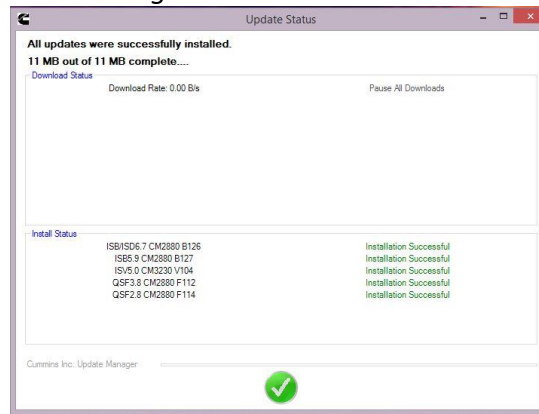
53. You may be prompted again to update some FIS files. Again, click on the *middle blue button with the yellow file folder*:



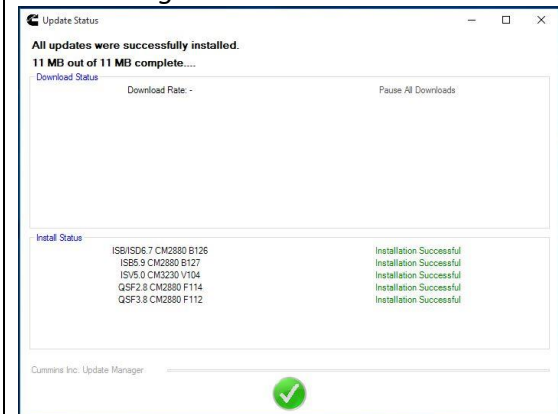
54. Once the updates are complete, click on the *green check mark*:



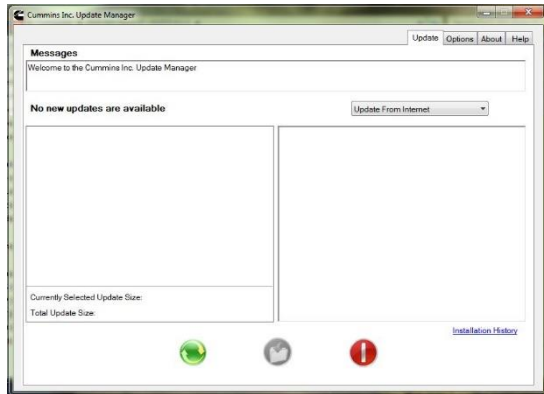
54. Once the updates are complete, click on the *green check mark*:



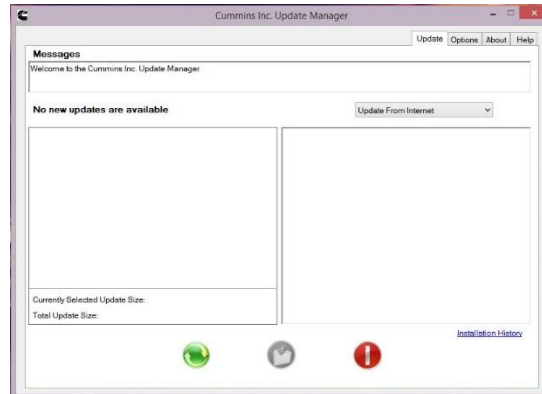
54. Once the updates are complete, click on the *green check mark*:



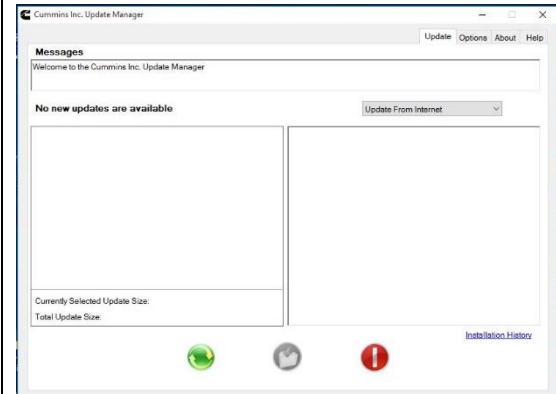
55. Once all the updates are complete, it will state that No new updates are available. Click on *the right-hand red button* to exit:



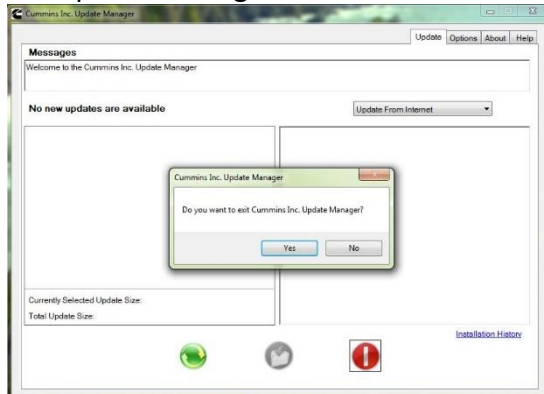
55. Once all the updates are complete, it will state that No new updates are available. Click on the *right-hand red button* to exit:



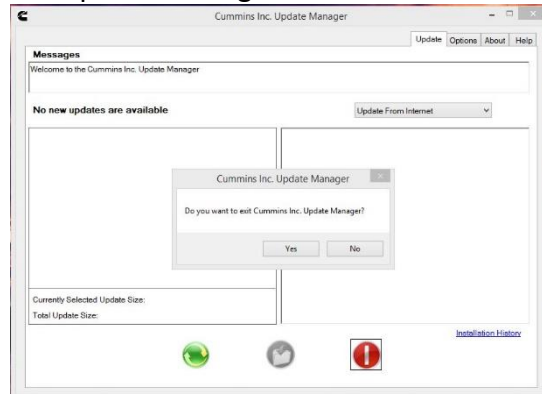
55. Once all the updates are complete, it will state that No new updates are available. Click on the *right-hand red button* to exit:



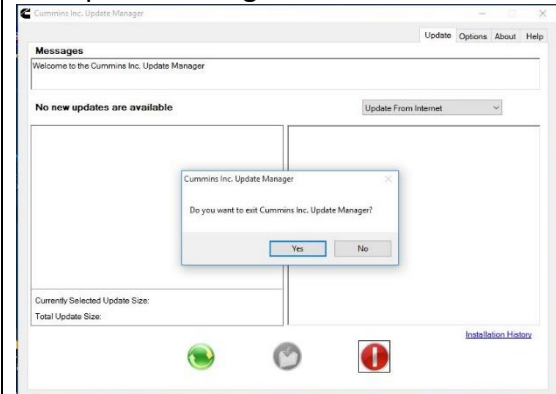
56. Click on Yes to exit the Cummins Inc. Update Manager:



56. Click on Yes to exit the Cummins Inc. Update Manager:



56. Click on Yes to exit the Cummins Inc. Update Manager:



57. In the INSITE Installation Menu, click on *Exit* to close the screen:



58. Find the Cummins INSITE icon on the desktop and double click on it. If you have not already done so, please contact your local Cummins distributor to obtain a valid license.

57. In the INSITE Installation Menu, click on *Exit* to close the screen:



58. Find the Cummins INSITE icon on the desktop and double click on it. If you have not already done so, please contact your local Cummins distributor to obtain a valid license.

57. In the INSITE Installation Menu, click on *Exit* to close the screen:



58. Find the Cummins INSITE icon on the desktop and double click on it. If you have not already done so, please contact your local Cummins distributor to obtain a valid license.