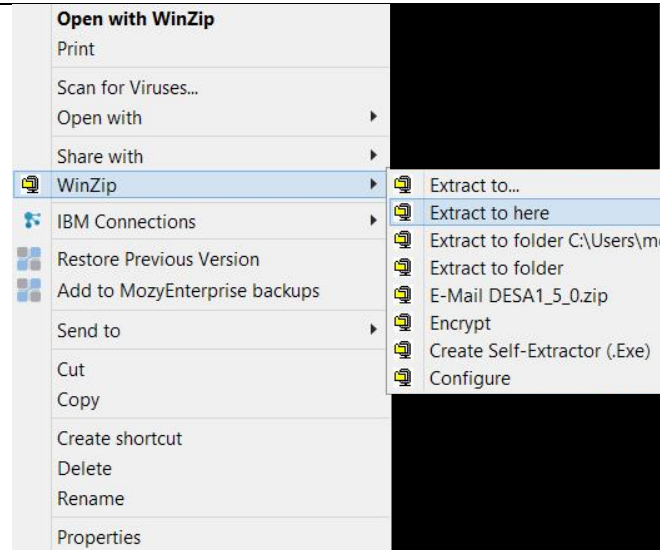


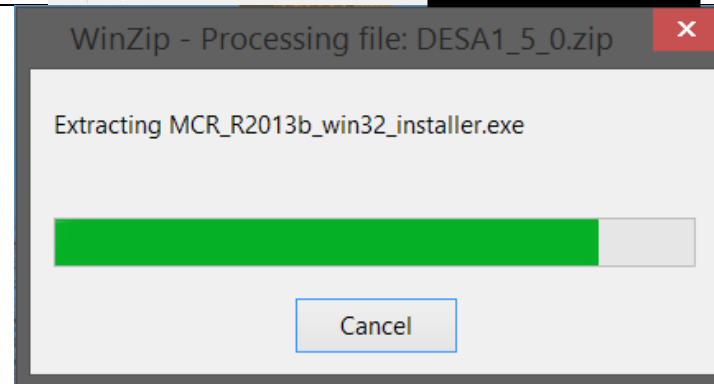
DESA was created to help systematically diagnose complex issues arising in engine and aftertreatment systems. The application runs a dynamic self-test of key engine and aftertreatment systems, creates a log file, and provides an analysis of that log file in order guide diagnostic activities.

The following procedure provides instructions for installation of DESA from insite.cummins.com and the licensing process. *Note: if requesting DESA from software shelf, there will be no action required for installation other than the submission of the request.*

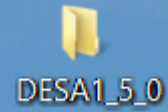
1. DESA will download as a zip file due to its size. Right click the DESA zip file and select “Extract to here”.



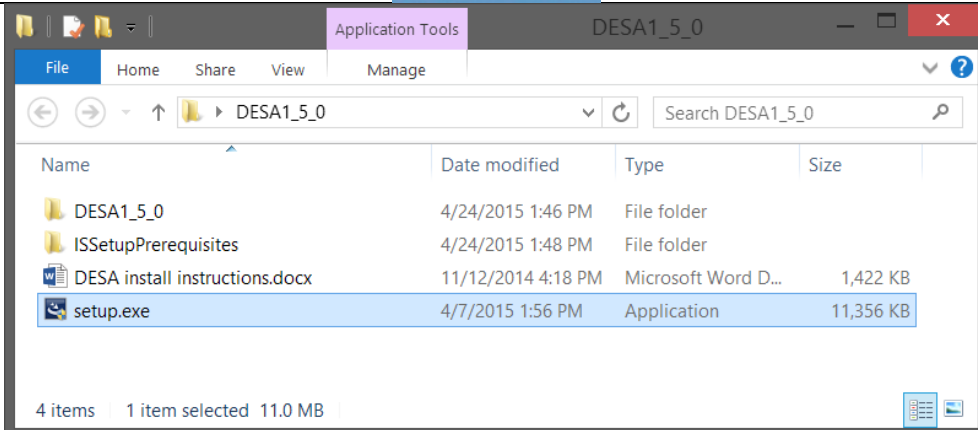
2. WinZip will extract the contents.



3. Open the extracted folder.

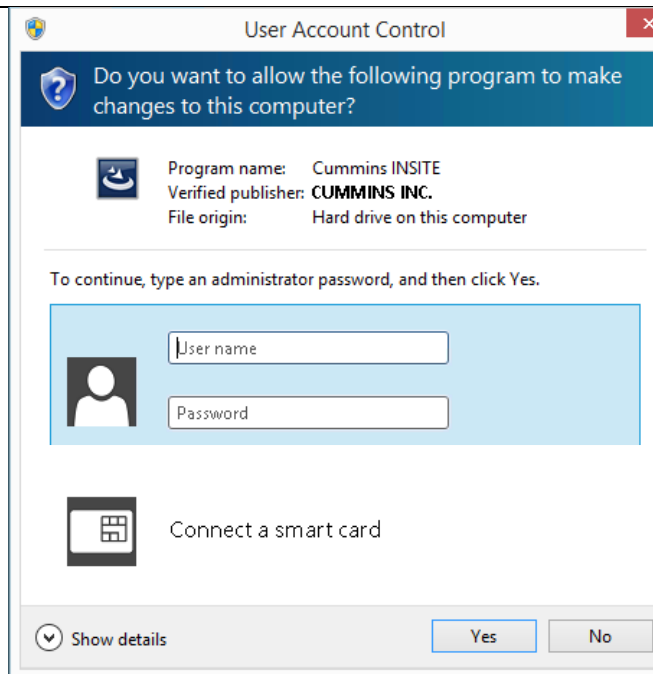


4. Open "setup.exe".

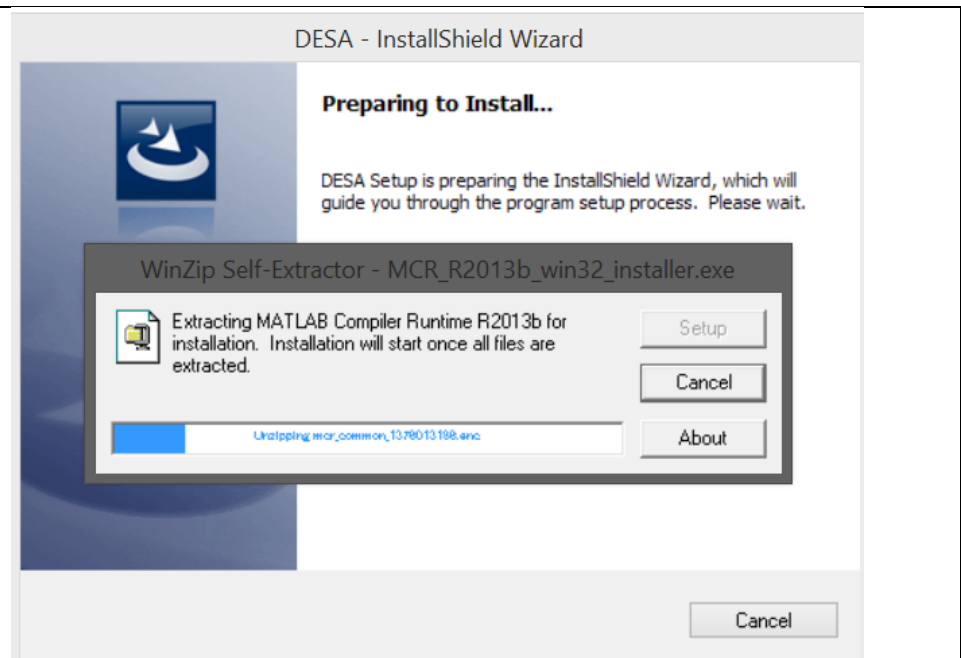


5. DESA requires administrator credentials to install. Enter them at this time.

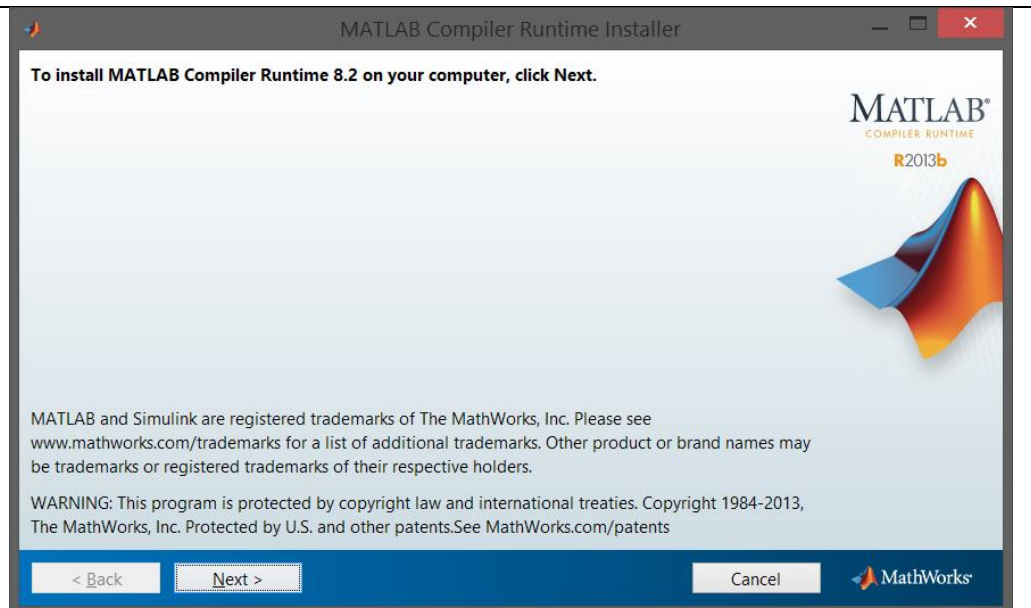
NOTE: Steps 6-12 only apply if DESA has never been installed. If the installation is an upgrade from DESA 1.4, then steps 6-12 do not apply.



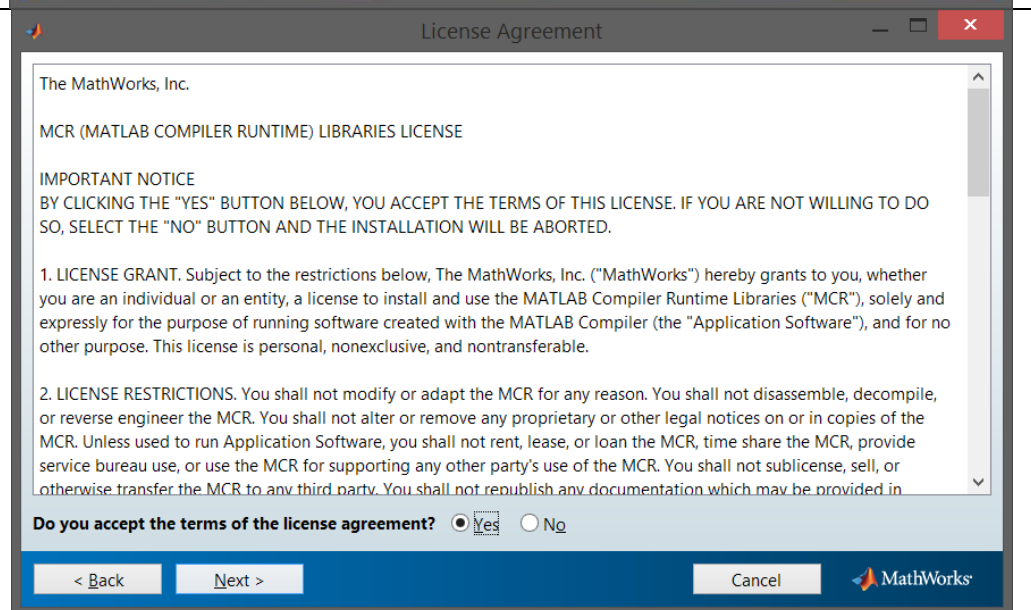
6. The installer will extract files for installation.
No action is needed at this step.



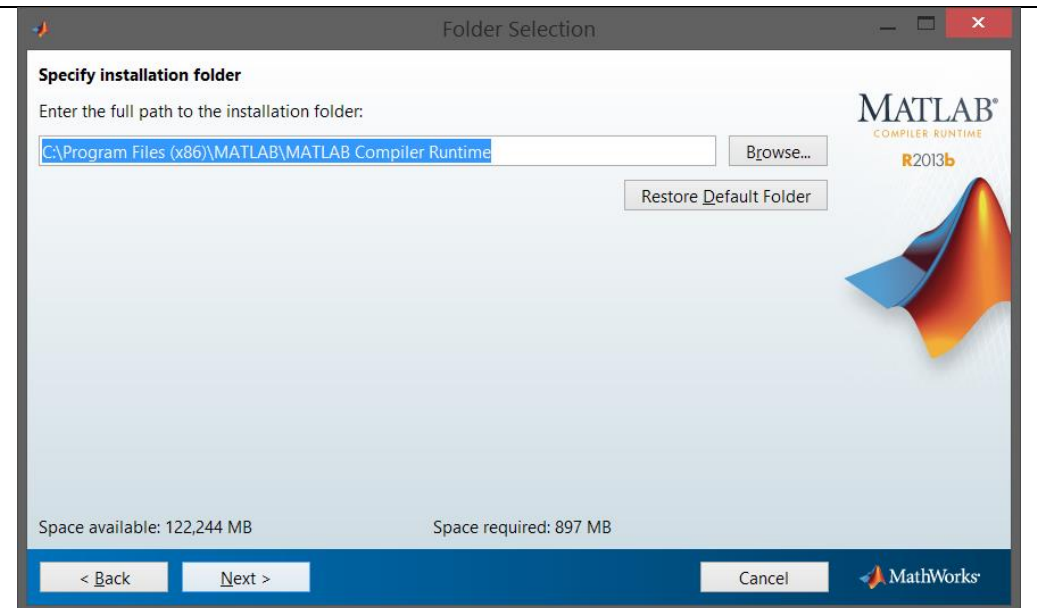
7. Click "Next" to proceed.



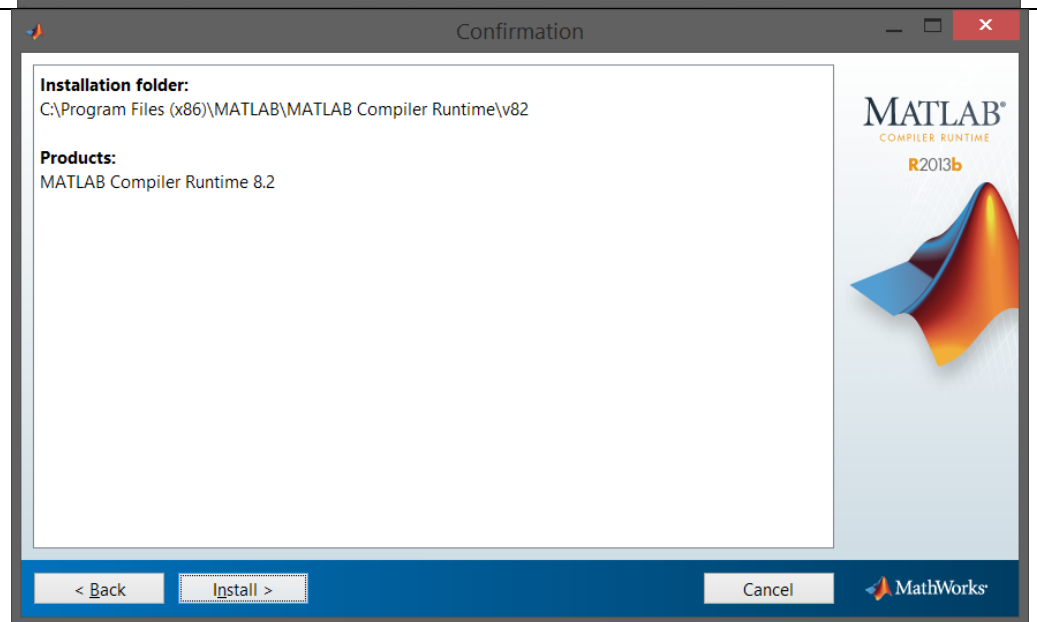
8. Read the License Agreement, click the radio "Yes" button, and then select "Next" to continue.



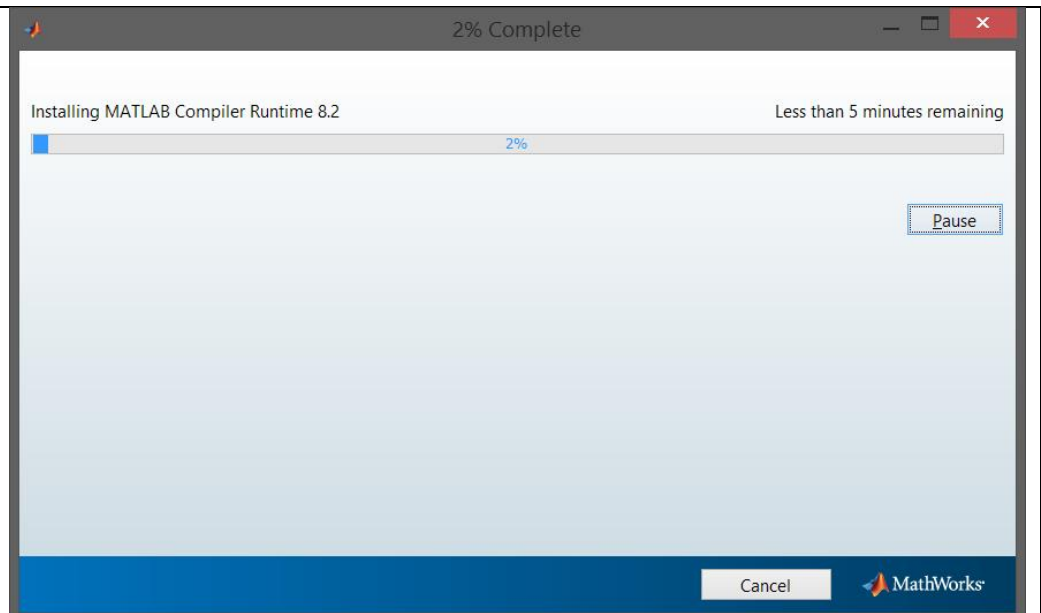
9. The installer provides a default installation path for the software. Specify another if desired. Click “Next” to continue.



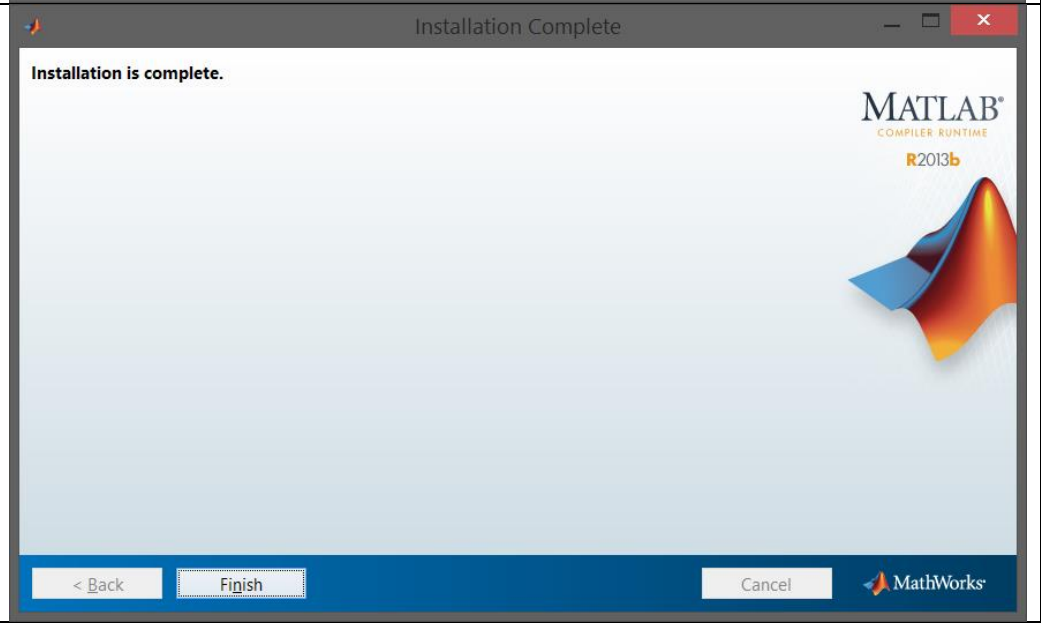
10. Confirm that the install path and products to be installed are correct. Click “Install” to proceed.



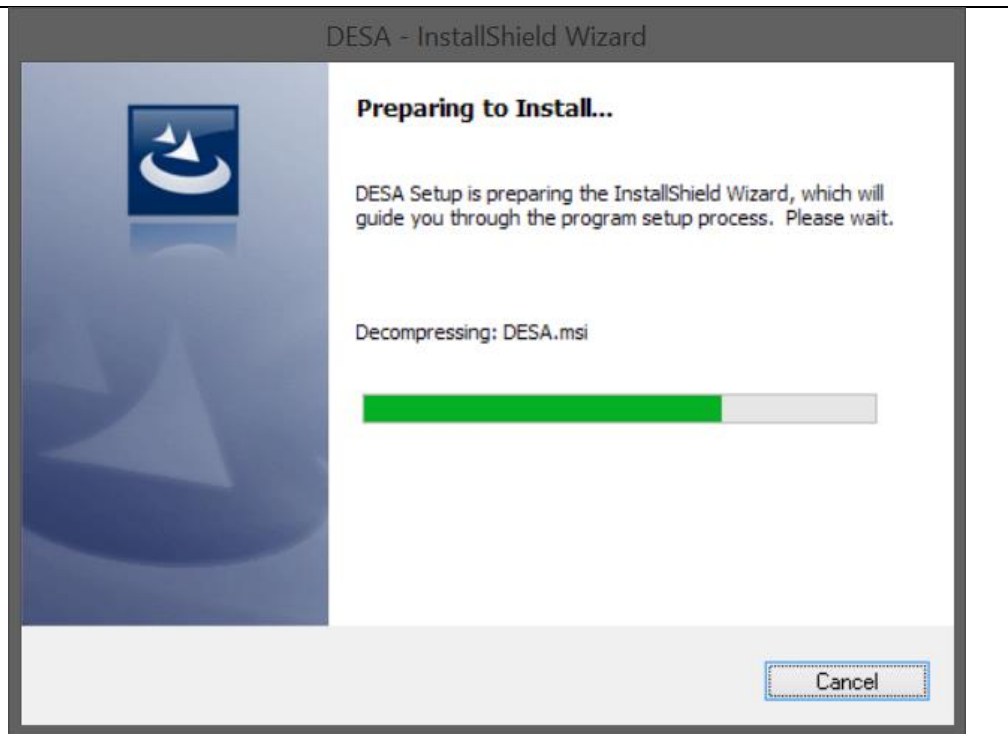
11. The components will be installed.



12. Click "Finish" to proceed.



13. The installer will prepare for the DESA installation. No action is needed at this step.



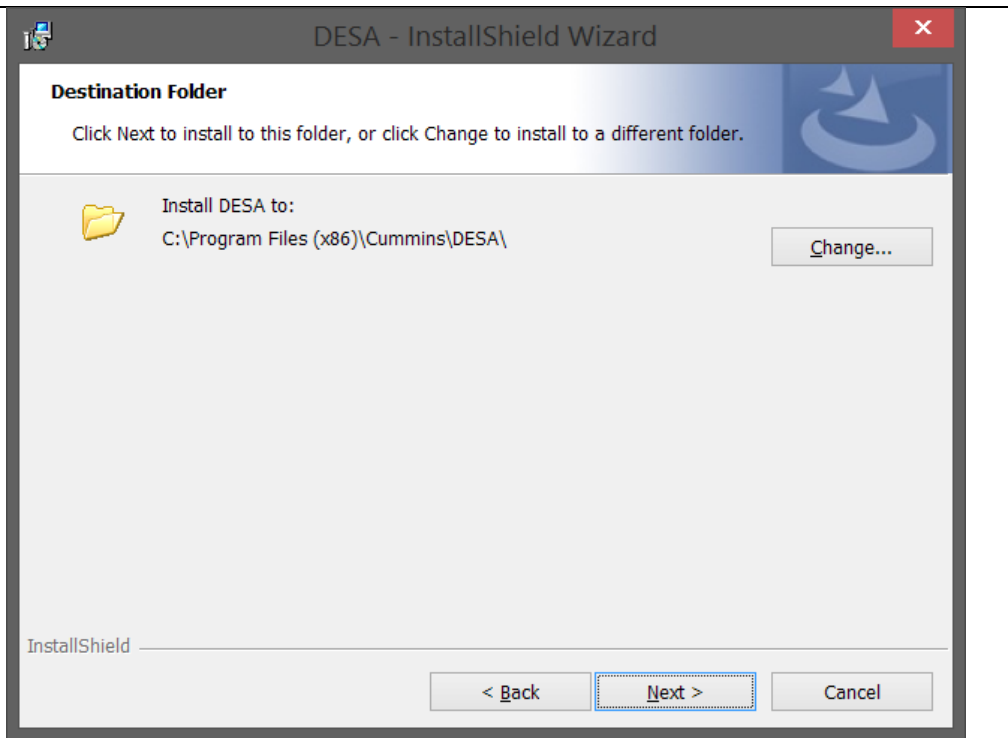
14. Click "Next" to proceed.



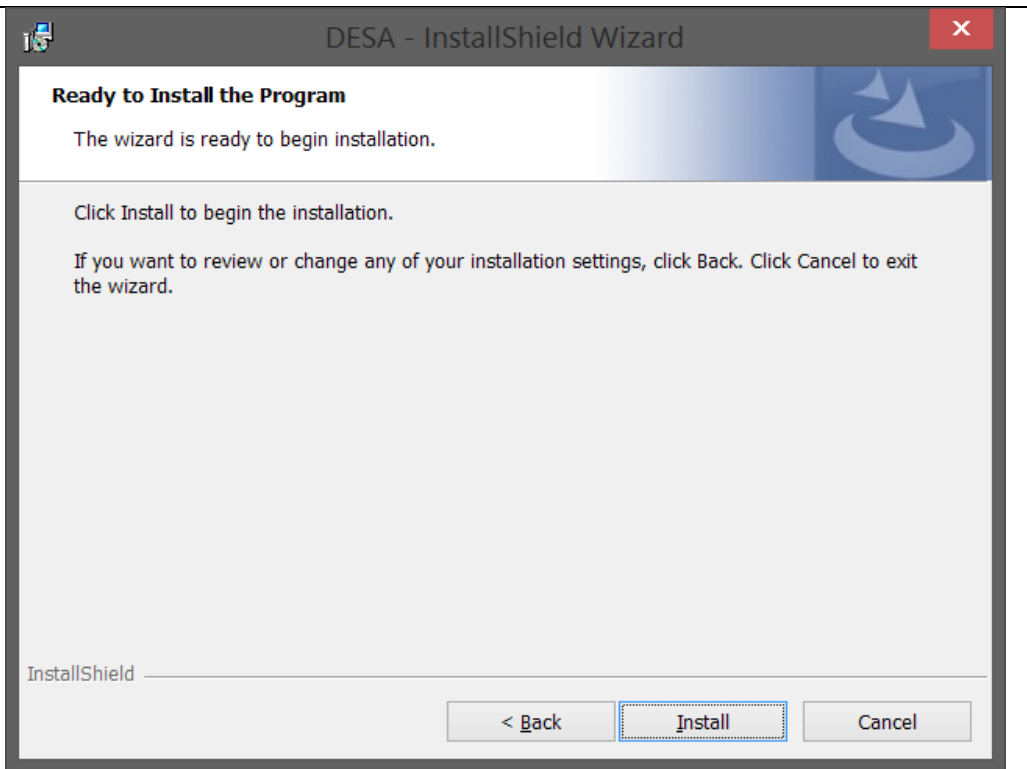
15. Read the License Agreement, click the radio "I accept the terms in the license agreement" button, and then select "Next" to continue.



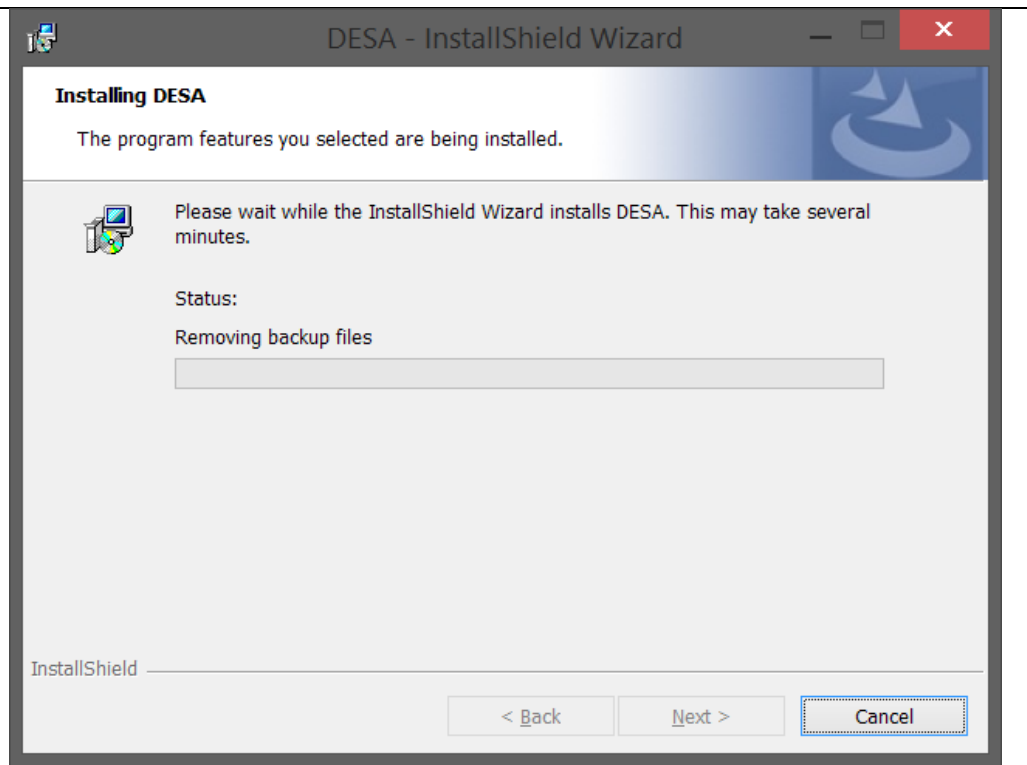
16. DESA provides a default installation path for the software. Specify another if desired. Click "Next" to continue.



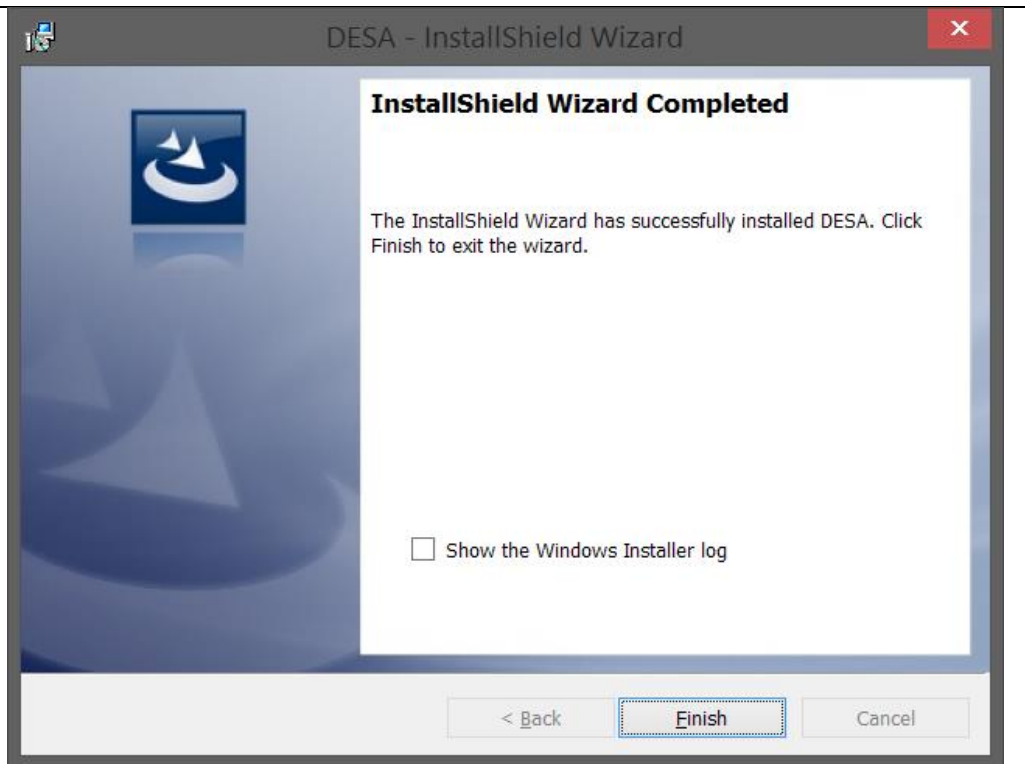
17. Click "Install" to continue.



18. DESA will be installed.



19. Click "Finish" to complete the installation.



20. To run DESA, open the shortcut created on the desktop.



21. When running DESA for the first time, click the help button in the main panel for information on how to request a license.

